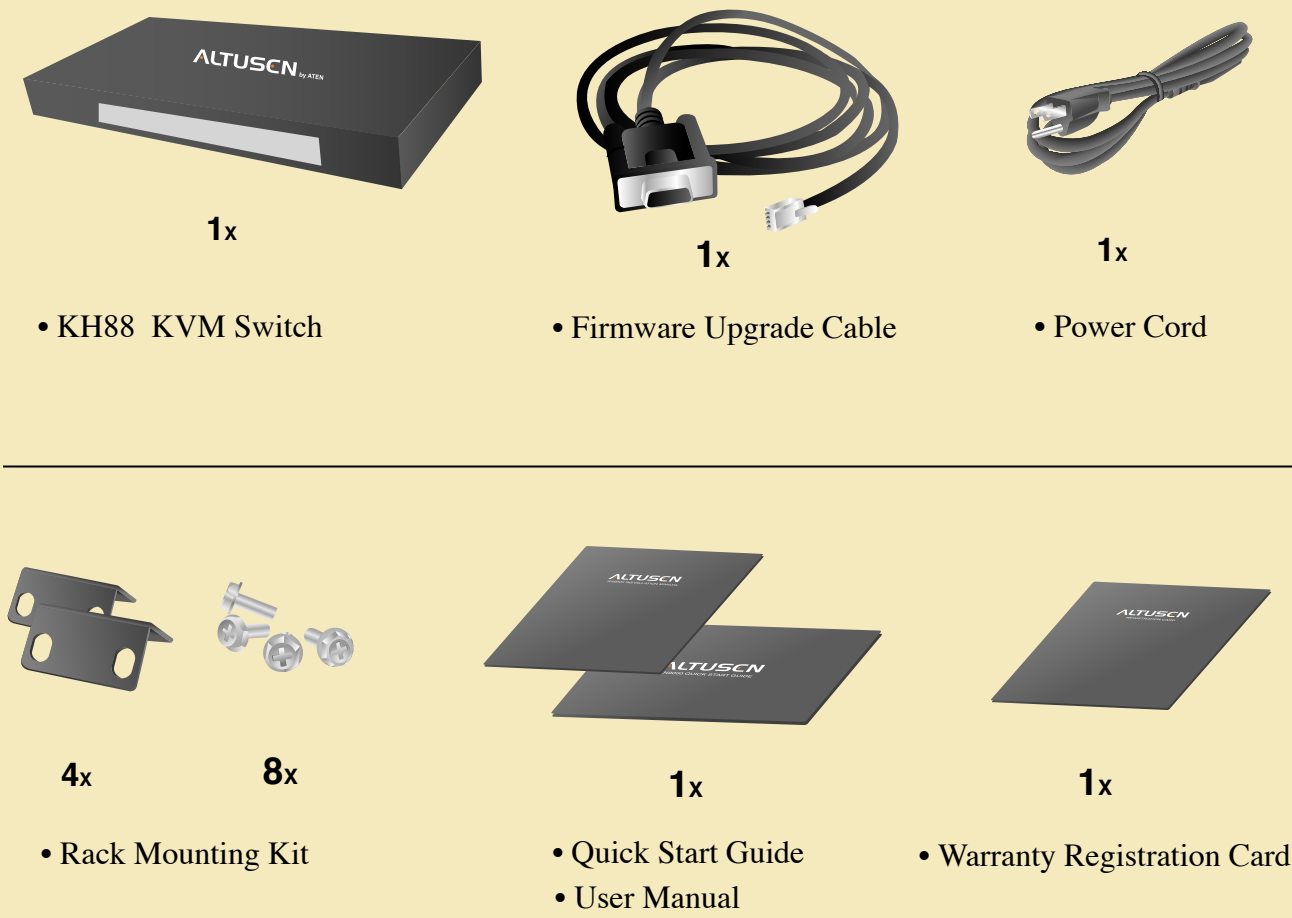


1 Package Contents

The complete KH88 package consists of:



NOTE: Check to make sure that each item in the above list is included in your package. If any item is missing or was damaged in shipment, please contact your dealer. Read this manual thoroughly. Follow the installation and operation procedures carefully to prevent damage to the KH88 unit and any connected devices.

2 System Requirements

This section details the required hardware components for successful installation and use of the KH88

Console

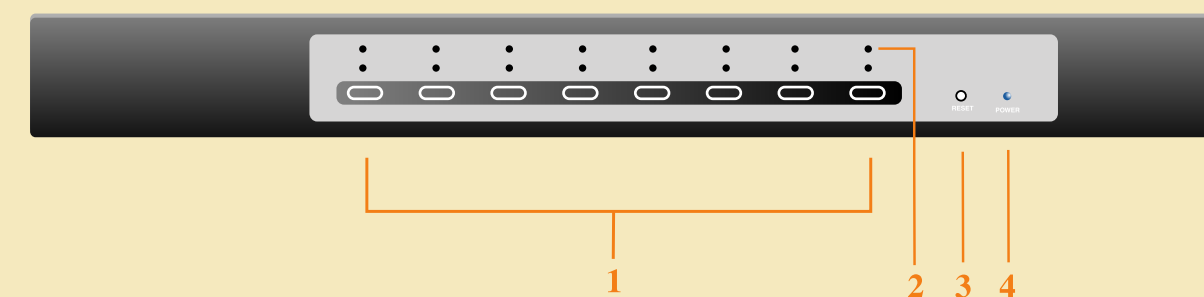
- A VGA, SVGA or Multisync monitor capable of the highest resolution that you plan to use on any computer in the installation
- A PS/2 style mouse
- A PS/2 style keyboard

Computers

To use and access the KH88 successfully, your computer requires the following:

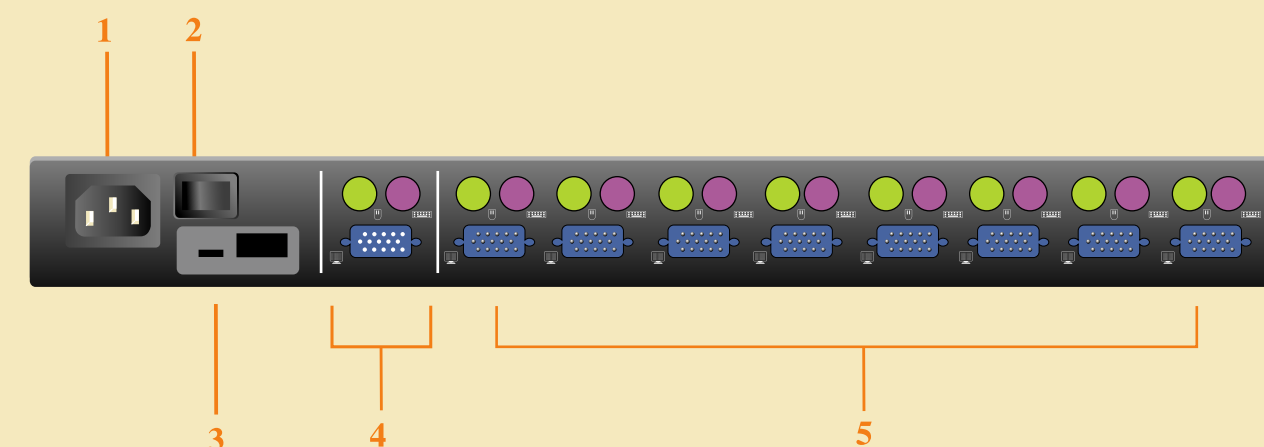
- A VGA, SVGA or Multisync card.
- A 6 pin mini-DIN (PS/2 style) mouse port. (The KH88 does not support serial mice)
- Either a 6-pin mini-DIN (PS/2 Style) keyboard port with +5V DC on pin 4 and Ground on pin 3, or a 5-pin DIN (AT Style) keyboard port with +5V DC on pin 5 and ground on pin 4 (PS/2 to AT adapter required).

3 The KH88 Unit (Front View)



1. Port Selection Switches
2. Port LEDs
3. Reset Switch
4. Power LED

4 The KH88 Unit (Rear View)



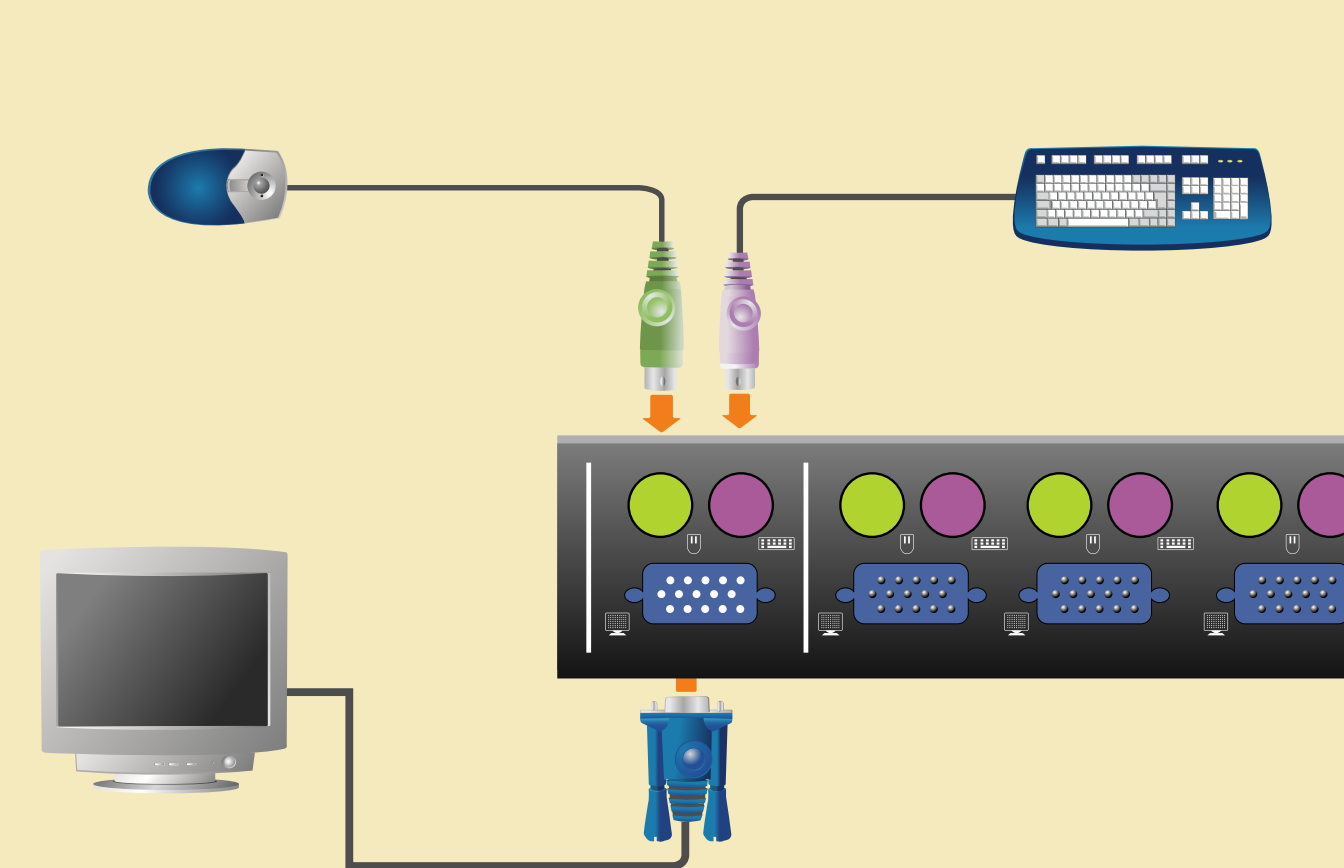
1. Power Socket
2. Power Switch
3. Firmware Upgrade Section
4. Console Port Section
5. CPU Port Section

5 Hardware Installation

To prevent damage to your equipment, please do the following before you begin installation:

- Make sure that power to all the devices you plan to connect are turned off.
- Make sure that all devices on the installation are properly grounded. Consult your dealer for the technical details if necessary.

6 Hardware Installation



1. Plug your keyboard, mouse, and monitor into the unit's Console Ports.
2. Use a KVM cable to connect any available CPU port to the keyboard, video and mouse ports of the computer you are installing.
3. Plug the power cable into the KH88 power socket, and then plug the power cable into an AC power source.
4. Turn on the power to the computers

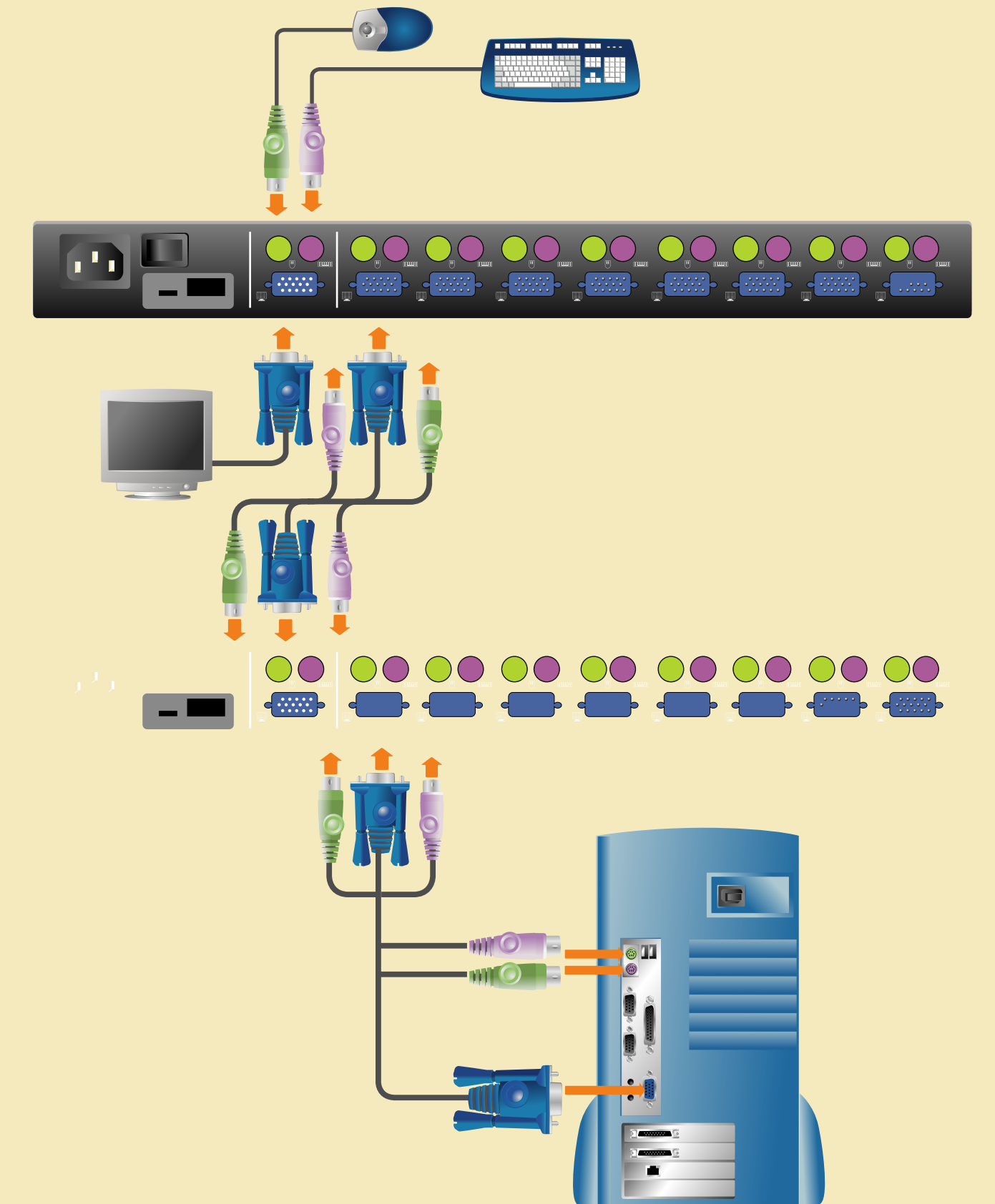
7 Hardware Installation

Cascading

To control even more computers, up to eight additional KH88 units can be cascaded from the CPU ports of the First Stage unit.

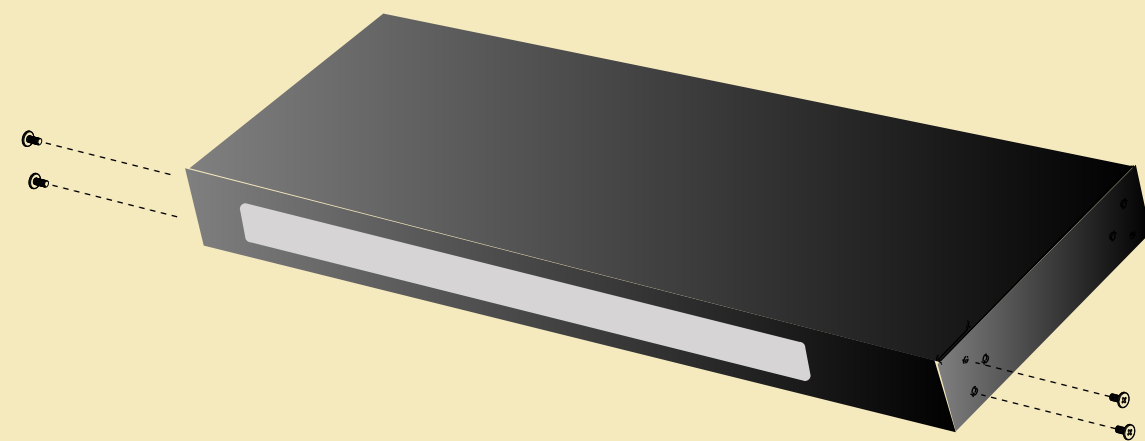
The cascaded KH88 that connect back to the First Stage unit are considered Second Stage units. As many as 64 computers can be controlled in a complete two stage installation.

8 Hardware Installation

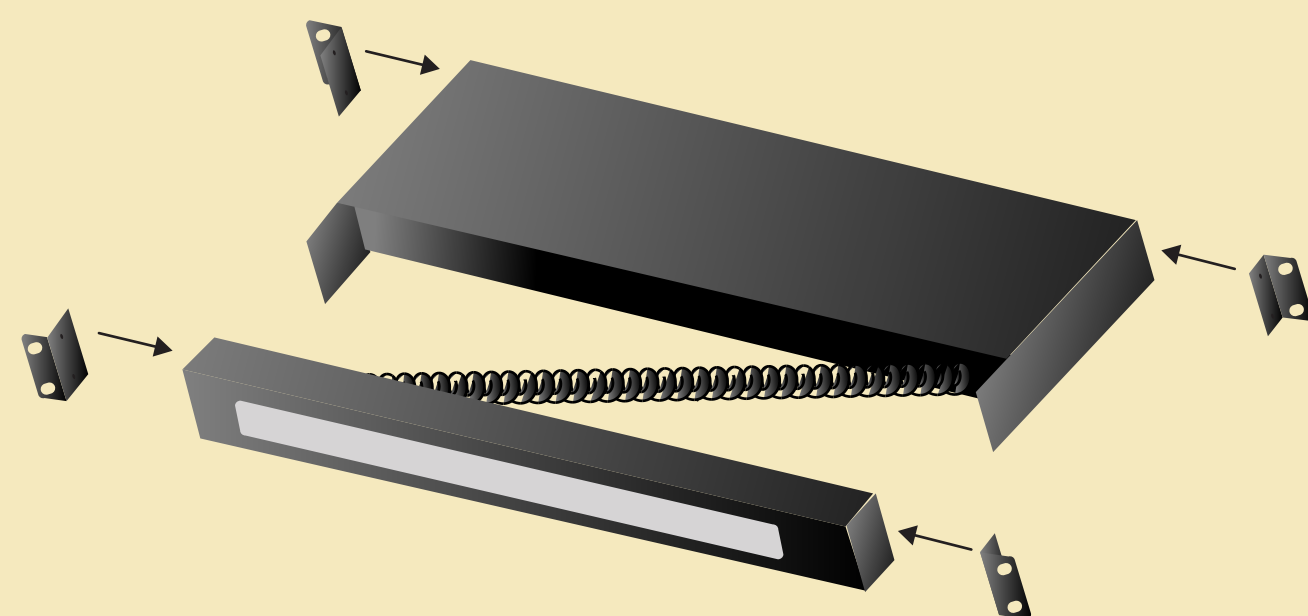


9 Rack Mounting

1. Separate the front and rear modules by removing the four module attaching

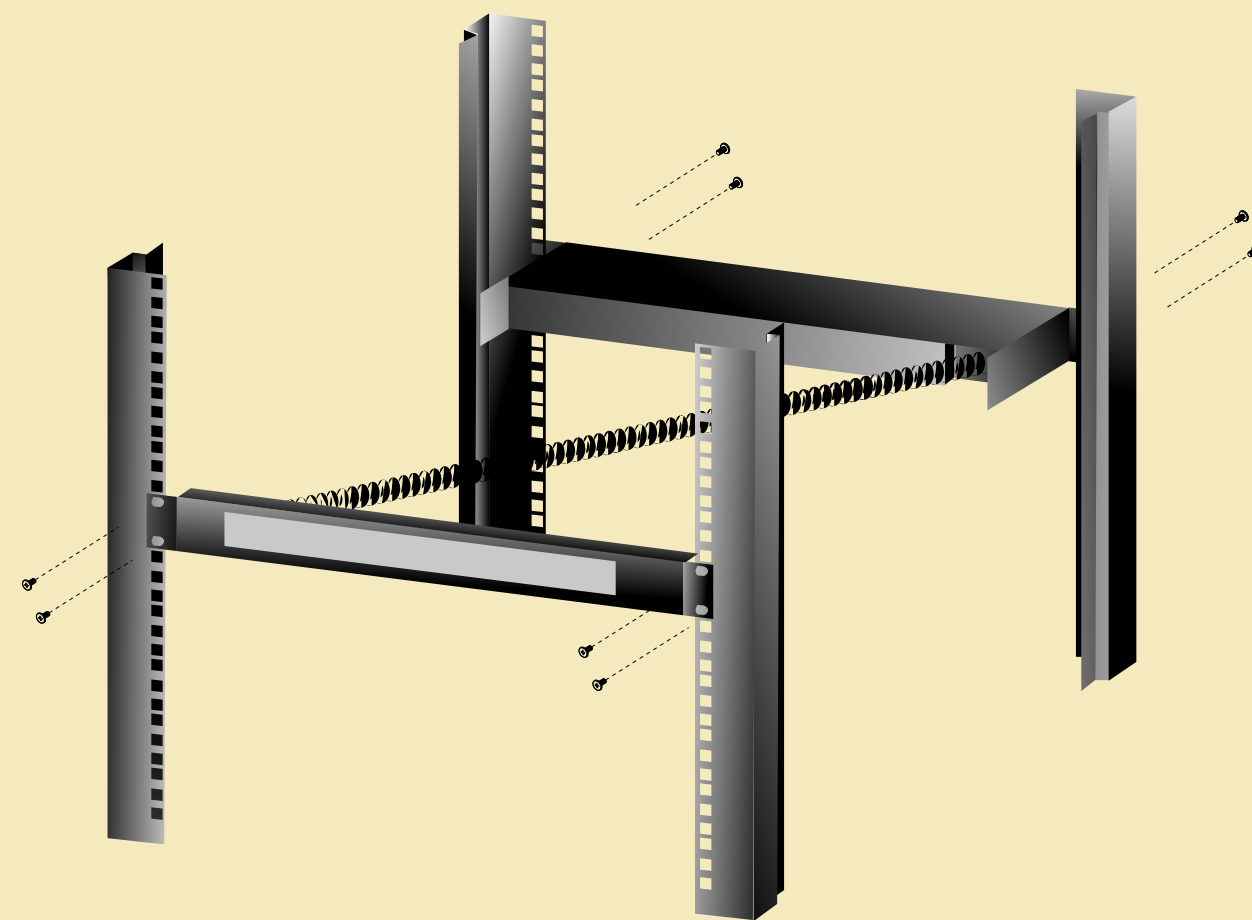


2. Screw the rack mounting brackets into the front and rear modules.



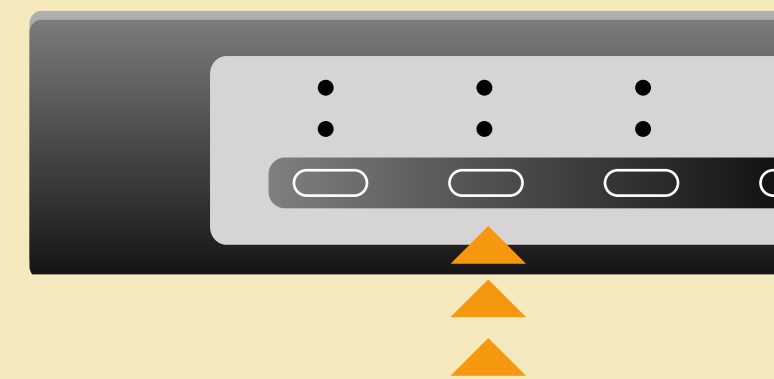
10 Rack Mounting

3. Screw the mounting brackets to the rack.



11 Operation (Manual Switching)

1. Press the appropriate Port Selection Switch on the KH-88's front panel. The Selected LED lights to indicate that the port has the KVM focus.



12 Operation (Hotkey Mode)

All Hotkey operations begin by invoking Hotkey Mode (HKM). To invoke HKM, do the following:

- [Num Lock] + [*] or [Num Lock] + [-].**
1. Press and hold down the Num Lock key.
 2. Press and release the asterisk key [*] or the minus key [-].
 3. Release the Num Lock key

Press **[Esc]** or **[Space bar]** to exit hotkey mode

13 Operation (Hotkey Mode)

Hotkey summary

[Num Lock] + [*] or [Num Lock] + [-]	[Port ID] [Enter]	Switches access to the computer that corresponds to that Port ID.
[T] [n] [Enter]		Sets the Auto Scan interval to n seconds - where n is a number from 1 - 255.
[A]		Invokes Auto Scan Mode. When Auto Scan Mode is in effect, [P] or Left Click pauses Auto Scanning. When Auto Scanning is paused, pressing any key or another Left Click resumes Auto Scanning.
[<]		Invokes Skip Mode and Skips from the current port to the first accessible port previous to it.
[>]		Invokes Skip Mode and Skips from the current port to the next accessible port.
[B]		Toggles the Beeper On or Off.
[R] [Enter]		Resets the KVM settings back to their defaults.

14 Operation (OSD)

To bring up the OSD Main Screen, tap the Scroll Lock key twice.
When you invoke the OSD, a screen similar to the one below appears:

F1:GOTO	F3:SET	F7:SCAN
F2:LIST	F4:ADM	F8:LOUT
ADMINISTRATOR		
LIST:ALL		
PN	QV	NAME
1-6-6	◀ ⚙	ATEN INTL. 1
1-6-7	◀ ⚙	ATEN INTL. 2
1-6-8	◀ ⚙	ATEN INTL. 3
1-7	◀ ⚙	FAX SERVER 1
1-8	◀ ⚙	FAX SERVER 2
2-1	◀ ⚙	WEB SERVER 1
2-2	◀ ⚙	WEB SERVER 2
2-3	◀ ⚙	MAIL SERVER 1

15 Operation (OSD)

OSD Main Screen Headings

Heading	Explanation
PN	This column lists the Port ID numbers (Station Number - Port Number) for all the CPU ports on the installation. The simplest method to access a particular computer is move the Highlight Bar to it, then press Enter.
QV	If a port has been selected for Quick View scanning, an arrowhead displays in this column to indicate so.
☀	The computers that are powered on and are On Line have a Sun symbol in this column to indicate so.
NAME	If a port has been given a name, its name appears in this column.

16 Operation (OSD)

OSD Navigation

To move up or down through the list one line at a time, Click the Up and Down Triangle symbols (▼ ▲) or use the Up and Down Arrow Keys. If there are more list entries than there is room for on the Main Screen, the screen will scroll.

To move up or down through the list one screen at a time, Click the Up and Down Arrow symbols (▼ ▲), or use the [Pg Up] and [Pg Dn] keys. If there are more list entries than there is room for on the Main Screen, the screen will scroll.

17 Operation (OSD)

OSD Functions

To activate a port, Double Click it, or move the Highlight Bar to it then press [Enter].

After executing any action, you automatically go back to the menu one level above.

To dismiss the current menu, and return to the previous one, press [Esc].

To dismiss the Main Screen, and deactivate the OSD (but not log out), press [Esc].

To Logout, Click F8 at the top of the Main Screen, or press [F8].