



Simply Better Connections

**US3384i**

8 x 4 USB 3.2 Gen 1 Sharing Switch  
User Manual

## Compliance Statements

---

### FEDERAL COMMUNICATIONS COMMISSION INTERFERENCE STATEMENT

This equipment has been tested and found to comply with the limits for a Class A digital device, pursuant to Part 15 of the FCC Rules. These limits are designed to provide reasonable protection against harmful interference when the equipment is operated in a commercial environment. This equipment generates, uses, and can radiate radio frequency energy and, if not installed and used in accordance with the instruction manual, may cause harmful interference to radio communications. Operation of this equipment in a residential area is likely to cause harmful interference in which case the user will be required to correct the interference at his own expense.

The device complies with Part 15 of the FCC Rules. Operation is subject to the following two conditions: (1) this device may not cause harmful interference, and (2) this device must accept any interference received, including interference that may cause undesired operation.

### FCC Caution

Any changes or modifications not expressly approved by the party responsible for compliance could void the user's authority to operate this equipment.

### Warning

Operation of this equipment in a residential environment could cause radio interference.

### Achtung

Der Gebrauch dieses Geräts in Wohnumgebung kann Funkstörungen verursachen.



### KCC Statement

유선 제품용 / A 급 기기 (업무용 방송 통신 기기)  
이 기기는 업무용 (A 급) 전자파적합기기로서 판매자 또는 사용자는 이  
점을 주의하시기 바라며, 가정 외의 지역에서 사용하는 것을 목적으로  
합니다.

**Industry Canada Statement**

This Class A digital apparatus complies with Canadian ICES-003.

**CAN ICES (A) / NMB (A)**

**RoHS**

This product is RoHS compliant.

## User Information

---

### Online Registration

Be sure to register your product at our online support center:

International	<a href="http://eservice.aten.com">http://eservice.aten.com</a>
---------------	---

---

### Telephone Support

For telephone support, call this number:

International	886-2-8692-6959
China	86-400-810-0-810
Japan	81-3-5615-5811
Korea	82-2-467-6789
North America	1-888-999-ATEN ext 4988 1-949-428-1111

---

### User Notice

All information, documentation, and specifications contained in this manual are subject to change without prior notification by the manufacturer. The manufacturer makes no representations or warranties, either expressed or implied, with respect to the contents hereof and specifically disclaims any warranties as to merchantability or fitness for any particular purpose. Any of the manufacturer's software described in this manual is sold or licensed *as is*. Should the programs prove defective following their purchase, the buyer (and not the manufacturer, its distributor, or its dealer), assumes the entire cost of all necessary servicing, repair and any incidental or consequential damages resulting from any defect in the software.

The manufacturer of this system is not responsible for any radio and/or TV interference caused by unauthorized modifications to this device. It is the responsibility of the user to correct such interference.

The manufacturer is not responsible for any damage incurred in the operation of this system if the correct operational voltage setting was not selected prior to operation. PLEASE VERIFY THAT THE VOLTAGE SETTING IS CORRECT BEFORE USE.

## Product Information

---

For information about all ATEN products and how they can help you connect without limits, visit ATEN on the Web or contact an ATEN Authorized Reseller. Visit ATEN on the Web for a list of locations and telephone numbers:

International	<a href="http://www.aten.com">http://www.aten.com</a>
North America	<a href="http://www.aten-usa.com">http://www.aten-usa.com</a>

## Package Contents

---

Check to make sure that all the components are in working order. If you encounter any problem, please contact your dealer.

1 US3384i 8 x 4 USB 3.2 Gen 1 Sharing Switch

8 USB 3.2 Gen 1 Type-A to USB Type-B cables

1 foot pad set (4 pcs)

1 terminal block adapter set (an RS-232, an RS-485, and a DC terminal block adapter)

1 mounting kit

1 user instructions

# Table of Contents

---

Compliance Statements .....	ii
User Information .....	iv
Online Registration .....	iv
Telephone Support .....	iv
User Notice .....	iv
Product Information .....	v
Package Contents .....	vi
Table of Contents .....	vii
About this Manual .....	ix
Conventions .....	x
<b>1. Introduction</b>	
Overview .....	1
Features .....	2
Components .....	3
<b>2. Hardware Setup</b>	
Placement .....	5
Rack Mounting .....	6
Wall Mounting .....	6
Foot Pad Set Attachment .....	7
Connecting the Device .....	8
RS-485 / RS-232 Terminal Block Connection .....	10
<b>3. Settings / Port Selection</b>	
Power on Detection .....	11
Power on Detection Indication .....	11
Enabling Power on Detection .....	11
Enabling Power on Detection and Priority Port .....	12
Firmware Upgrade .....	13
Upgrade Succeeded .....	16
Upgrade Failed .....	17
Baud Rate .....	17
RS-485 Baud Rate .....	17
RS-232 Baud Rate .....	17
Different Baud Rate .....	18
Port Selection .....	18
RS-485 / RS-232 Port Selection & Commands .....	19
<b>Appendix</b>	
Safety Instructions .....	21
General .....	21
Rack Mounting .....	23

Technical Support .....24

    International ..... 24

    North America .....24

Specifications .....25

ATEN Warranty Policy .....27

## About this Manual

---

This user manual is provided to help you get the most from the US3384i unit. It covers all aspects of installation, configuration, and operation. An overview of the information found in the manual is provided below.

**Chapter 1, Introduction** introduces you to the 8 x 4 USB 3.2 Gen 1 Sharing Switch. Its purpose, features, and panel components are presented and described.

**Chapter 2, Hardware Setup** describes the steps that are necessary to quickly and safely set up your installation.

**Chapter 3, Settings / Port Selection** explains the port selection options and serial commands of the unit.

**Appendix** provides a list of safety instructions and precautions, contact information for ATEN technical support, product specifications, and other technical information.


---

### Note:

- ♦ Read this manual thoroughly and follow the installation and operation procedures carefully to prevent any damage to the unit or any connected devices.
  - ♦ The product may be updated, with features and functions added, improved or removed since the release of this manual. For an up-to-date user manual, visit <http://www.aten.com/global/en/>
-

## **Conventions**

This manual uses the following conventions:

- |  |  |
|--|--|
| <p>Monospaced</p> <p>[ ]</p> <p>1.</p> <p>◆</p> <p>&gt;</p> <p></p> | <p>Indicates text that you should key in.</p> <p>Indicates keys you should press. For example, [Enter] means to press the <b>Enter</b> key. If keys need to be chorded, they appear together in the same bracket with a plus sign between them: [Ctrl+Alt].</p> <p>Numbered lists represent procedures with sequential steps.</p> <p>Bullet lists provide information, but do not involve sequential steps.</p> <p>Indicates selecting the option (on a menu or dialog box, for example), that comes next. For example, Start &gt; Run means to open the <i>Start</i> menu, and then select <i>Run</i>.</p> <p>Indicates critical information.</p> |
|--|--|

# Chapter 1

## Introduction

### Overview

---

Built to take your BYOM/BYOD experience to the next level, the US3384i allows sharing of up to 4 USB 3.2 devices, such as keyboards, mice, cameras, speakerphones, and sound bars, among 8 PCs to declutter workspaces while permitting smooth USB content sharing across multiple meeting participants.

Conferences are kept disruption-free thanks to its blazing fast bandwidth speed of 5 Gbps and the backward compatibility with USB 2.0/1.1 devices, ensuring swift data transmission. In addition, the US3384i boasts versatile port selection methods, including the pushbutton on the front, the RS-232/RS-485 serial commands, and the external remote port selector\*, which add more flexibility to its operation. The US3384i supports Power on Detection function, which automatically switches the PC focus to the last plugged-in/powered-on host device. What is more, the priority port preference is configurable, allowing the focus to switch to a secondary USB host when the primary one is lost. The front-panel port status LEDs illuminate to indicate which one of the PCs connected to the US3384i is having the focus at a glance.

In terms of installation, the US3384i comes with plug-and-play support on Windows and macOS operating systems, meaning no drivers are needed. It is also hot-pluggable, so users can connect/disconnect the host devices dynamically to the US3384i without powering off the switch. The case is constructed with premium metal for enhanced durability and supports wall-mounting to meet more installation requirements.

---

**Note:** The remote port selector is sold separately. Please contact your ATEN dealer for product information.

---

## Features

---

- ◆ Allows sharing of up to 4 USB 3.2 devices among 8 PCs
- ◆ Bandwidth speed of 5 Gbps and backward compatibility with USB 2.0/1.1 to ensure swift data transmission
- ◆ Versatile port selection methods – front panel pushbutton, RS-232/RS-485 serial commands, and external remote port selector<sup>1</sup>
- ◆ Power on Detection
  - ◆ Automatically switches the PC focus to the last plugged-in/power-on host device
  - ◆ Configurable priority port preference – allows the focus to switch to a secondary USB host when the primary one is lost
- ◆ Front panel port status LEDs – indicate which one of the PCs connected to the US3384i is having the focus at a glance
- ◆ Supports USB BC 1.2 to ensure sufficient power for downstream USB devices
- ◆ Overvoltage protection circuit – extends device lifespan and minimizes risks of electrical hazards/explosions led by voltage spikes surpassing safe operating limits
- ◆ Supports DC 9 – 24V power input through terminal block<sup>2</sup>
- ◆ Plug-and-play on Windows and macOS operating systems – no drivers are needed
- ◆ Hot-pluggable – users can connect/disconnect the host devices dynamically to the US3384i without powering off the switch
- ◆ Wall-mountable case constructed with premium metal for enhanced durability

---

**Note:** 1. The remote port selector is sold separately. Please contact your ATEN dealer for product information.

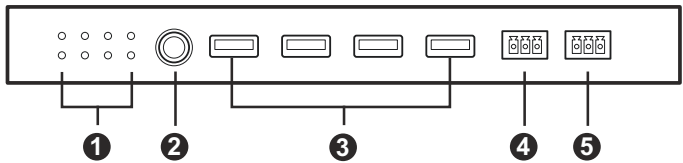
2. Supports either of the following power supplies:

(1) DC terminal block

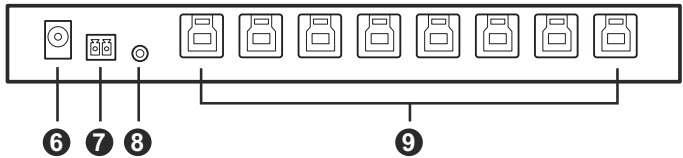
(2) DC power jack (The power adapter (0AD8-8012-50M2) is sold separately. Please contact your ATEN dealer for product information.)

# Components

## Front View



## Rear View



No.	Component	Description
Front View		
1	port status LEDs	The LEDs correspond to the ports. When a port is selected and has the USB focus, the corresponding LED will light.
2	port selection pushbutton	<ul style="list-style-type: none"><li>◆ Press the port selection pushbutton to switch the USB focus to the next port.</li><li>◆ Press and hold the port selection pushbutton and the power on the US3384i to invoke Firmware Upgrade Mode, see <i>Firmware Upgrade</i>, page 13.</li><li>◆ Press and hold the port selection pushbutton for 3 seconds to toggle the power on detection function on or off, see <i>Power on Detection</i>, page 11.</li></ul>
3	USB Type-A ports (peripheral)	Connect USB peripherals you wish to access from the computer in your setup.
4	RS-485 serial port	Connects to RS-485 serial command input for serial commands.
5	RS-232 serial port	<ul style="list-style-type: none"><li>◆ Connects to RS-232 serial command input for serial commands.</li><li>◆ Connects to a computer for firmware upgrade. See <i>Firmware Upgrade</i>, page 13.</li></ul>

## Rear View

No.	Component	Description
6	power jack	Connects a power adapter to power the unit. <b>Note:</b> The power adapter (0AD8-8012-50M2) is sold separately, please contact your ATEN dealer for product information.
7	power in terminal	Connects the terminals for the terminal block to power the unit.
8	remote selector jack	Connects with the remote port selector. <b>Note:</b> The remote port selector (2XRT-0016G-1) is sold separately, please contact your ATEN dealer for production information.
9	USB Type-B port (computer)	Connects up to 8 host computers.

## Chapter 2

# Hardware Setup

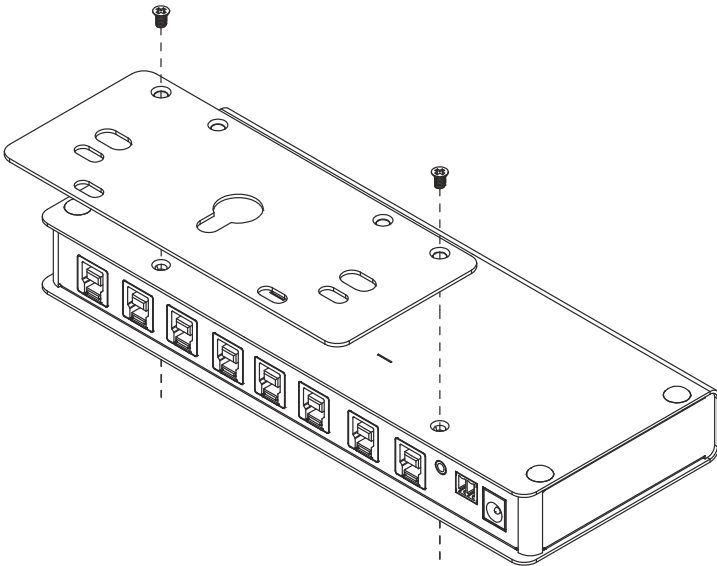


Please review the safety information regarding the placement of this device in *Safety Instructions*, page 21.

### Placement

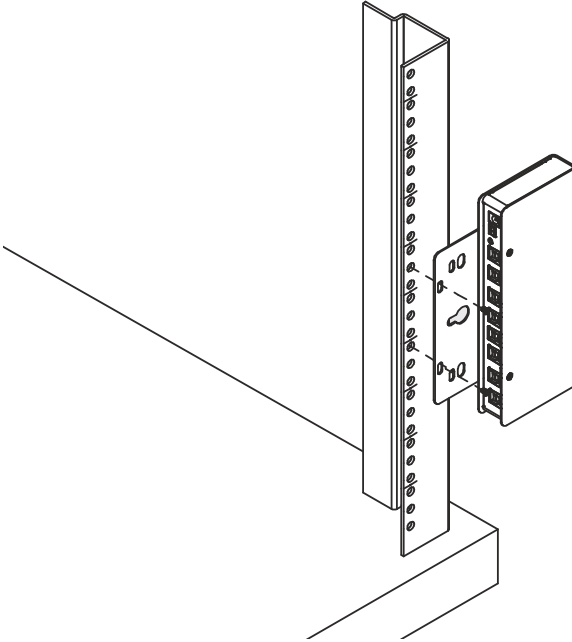
---

Use the screws supplied with the mounting kit to screw the mounting bracket to the bottom of the unit (Refer to the drawings shown below).



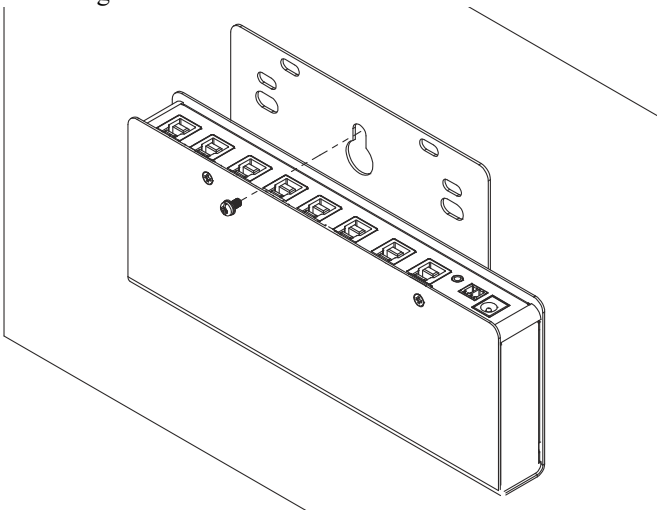
## **Rack Mounting**

Screw the mounting bracket to any convenient location on the rack.



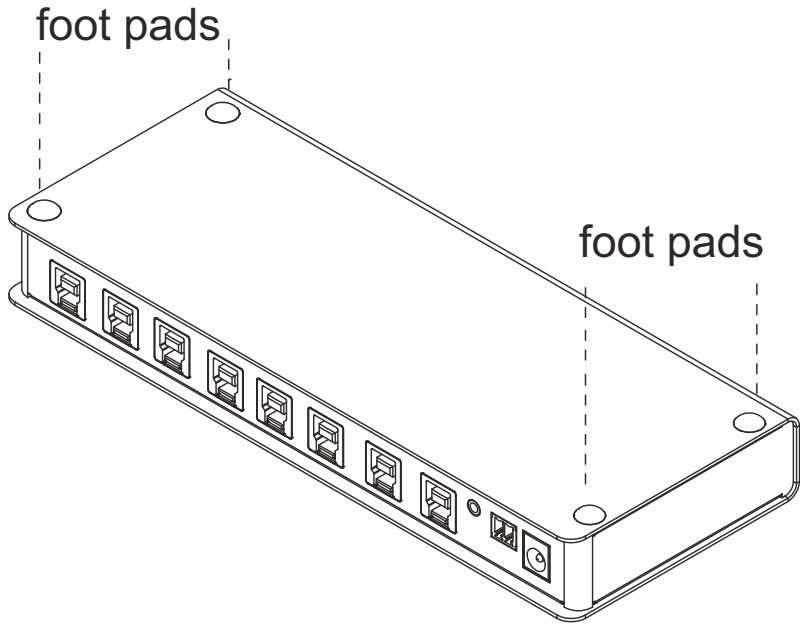
## **Wall Mounting**

Use the mounting bracket's center screw hole to mount the unit on a wall.



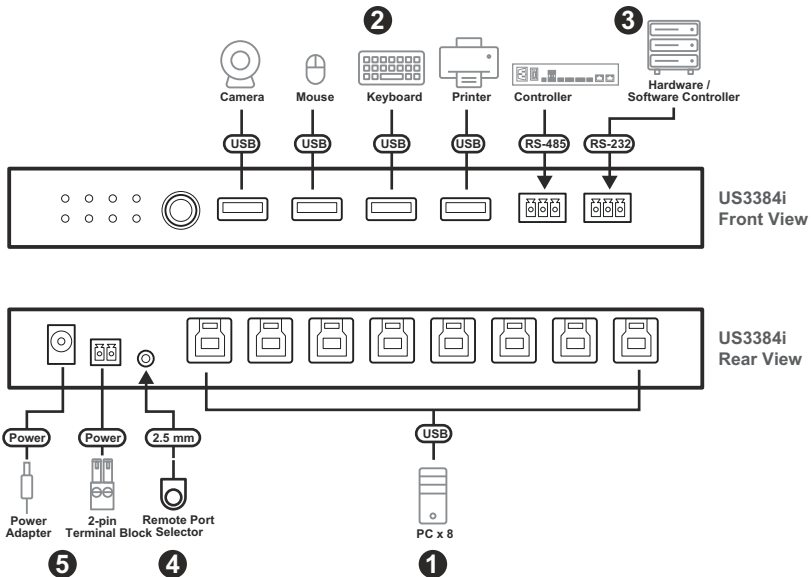
## Foot Pad Set Attachment

The foot pads can easily be attached to the bottom corners of the unit as shown in the diagram below.



## Connecting the Device

Follow the steps below to connect the US3384i unit.



1. Connect the USB 3.2 Gen 1 Type-A end of the supplied USB cables into your computers (up to 8 computers) and then connect the USB 3.2 Gen 1 Type-B end of the supplied USB cables into the unit's USB Type-B ports (computer).
2. Connect up to 4 USB peripherals such as a USB mouse, USB keyboard, printer, or external hard drive to the unit's USB Type-A ports (peripheral).
3. (Optional) Connect a control system (e.g., VK Control Box) or a serial controller to the unit's RS-485 or RS-232 serial ports for control purposes.
4. (Optional) Connect a remote port selector to the unit's remote port selector jack for port switching.

**Note:** The remote port selector (2XRT-0016G-1) is sold separately, please contact your ATEN dealer for product information.

5. Prepare a power input by either:

- a) Connect the supplied 2-pin terminal block for power input<sup>1</sup>: Insert DC + and - wire (9 to 24V DC) to the 2-pin terminal block according to the labeled signs. Tighten the slot screws and connect the 2-pin terminal block to the unit's power in terminal.
- b) (Optional) Connecting a power adapter<sup>2</sup> to the unit's power jack.

---

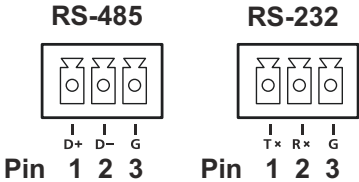
**Note:** 1. If both power inputs are connected, the one with higher power input will be prioritized. For example, if the power in terminal is connected to a 24V DC power adapter wires via the 2-pin terminal block, the power in terminal will be prioritized because the maximum power output of the power adapter is 12V.

2. The power adapter (0AD8-8012-50M2) is sold separately, please contact your ATEN dealer for product information.

---

# RS-485 / RS-232 Terminal Block Connection

For RS-485 / RS-232 connection, please connect the wires according to the diagram below and the following table.



For RS-485 / RS-232 commands, please refer to *RS-485 / RS-232 Port Selection & Commands* on page 19.

Pin	RS-485 (2-wire)	RS-232 (2-wire)
1	Data + (A)	Tx
2	Data - (B)	Rx
3	G	G

For RS-232 connection, the Tx terminals of your controller must be connected to the Rx terminals of the terminal block, and vice versa.

If you wish to have centralized control, you may utilize an ATEN Control Box (e.g. 2A-485, VK2100) where it can issue serial commands to control the unit. Please also connect the RS-485 / RS-232 interface according to the diagram and table above.

## Chapter 3

# Settings / Port Selection



Please review the safety information regarding the placement of this device in *Safety Instructions*, page 21.

### Power on Detection

---

The power on detection can be enabled or disabled, the default setting is disabled. To enable / disable the power on detection, you can do one of the following methods to toggle the power on detection on and off

- ◆ Press and hold the port selection pushbutton for 3 seconds, see *port selection pushbutton*, page 3.
- ◆ Use the serial command, see *RS-485 / RS-232 Port Selection & Commands*, page 19.

### Power on Detection Indication

- ◆ When the power on detection is set to on: All the port status LEDs flash once and the computer focus automatically switches to the current port.
- ◆ When the power on detection is set to off: All the port status LEDs flash twice and the computer focus automatically switches to the current port. This is the default setting.

### Enabling Power on Detection

When the power on detection is enabled, the US3384i performs the following behaviors.

- ◆ The computer focus automatically switches to a newly plugged-in or powered -on computer.
- ◆ When the focus computer is unplugged or powered off, the US3384i will automatically switch to the next available port in sequence.

## Enabling Power on Detection and Priority Port

If it is required to switch the computer focus to a specified port when the focused computer is unplugged or powered off, you can enable the priority port function. To set a priority port, make sure to enable the power on detection first and then set a specified port to be the priority port by using the serial command, see *RS-485 / RS-232 Port Selection & Commands*, page 19.

When the power on detection and priority port are enabled, the US3384i performs the following behaviors.

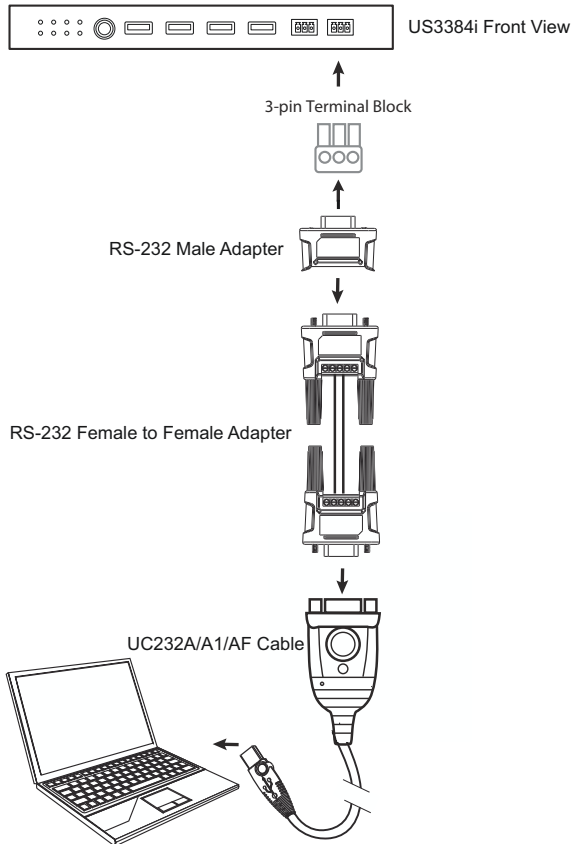
- ♦ The computer focus automatically switches to the priority port when the focused computer is unplugged or powered-off.
- ♦ When the priority port is unplugged or powered-off, the focus will switch to the next available port in sequence.

Please note, when the power on detection and priority port are enabled, the default port setting for the priority port is port 1.

## Firmware Upgrade

To upgrade the switch, prepare an ATEN UC232A/A1/AF USB to RS-232 Adapter and follow the steps below. For more information, contact your local ATEN dealer.

1. Power off the device by removing the power input (power adapter or DC Terminal Block).
2. Press and hold the port selection pushbutton and then power on the device. All the port status LEDs will start flashing to indicate it is now in Firmware Upgrade Mode.
3. Connect the switch to a PC using the self-prepared ATEN UC232A/A1/AF USB to RS-232 Adapter. For more information on how to setup the ATEN UC232A/A1/AF USB to RS-232 Adapter, please refer to the *ATEN UC232A/A1/AF UST to RS-232 Adapter user manual*.



- Download the firmware from the link below:

<https://www.aten.com/global/en/products/usb-&-thunderbolt/peripheral-switches/us3384i/>

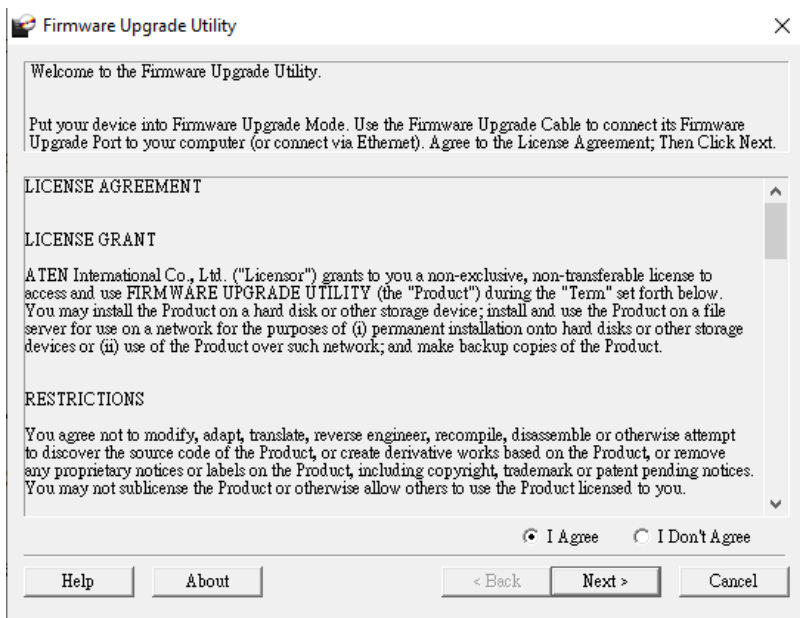
---

**Note:** If you wish to use a different baud rate for serial control, please contact our ATEN Technical Support for assistance.

---

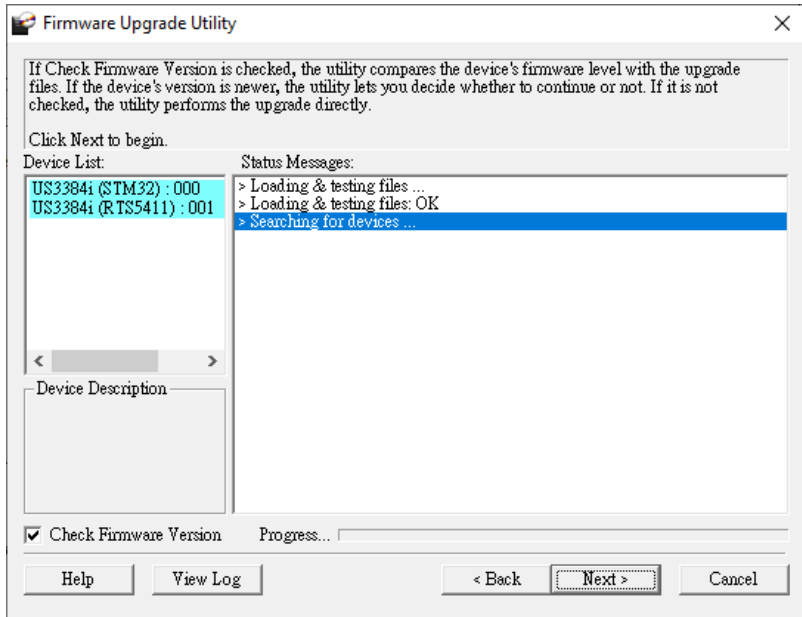
- If there is a terminal program opened, please make sure to close the terminal program before running the .exe firmware upgrade you have just downloaded.
- Run the downloaded Firmware Upgrade Package file by double-clicking the file icon.

The *Firmware Upgrade Utility* Welcome screen appears:



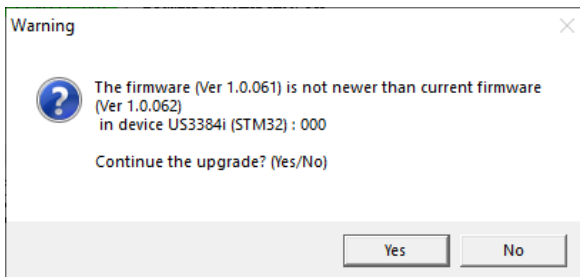
- Read the License Agreement (enable the *I Agree* radio button).

8. Click **Next** to continue. The Firmware Upgrade Utility main screen appears:



The Utility inspects your installation. All the devices capable of being upgraded by the package are listed in the *Device List* panel.

9. Click **Next** to perform the upgrade.



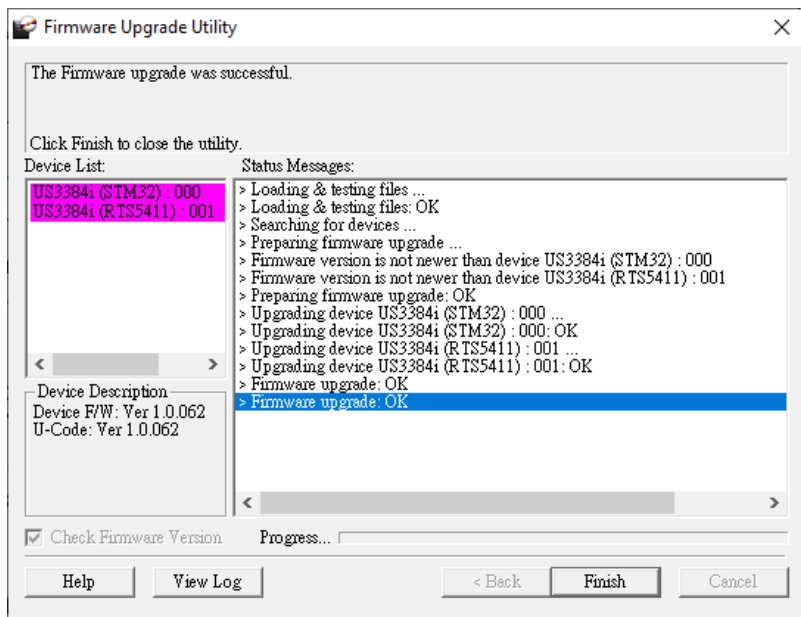
If you enabled Check Firmware Version, the Utility compares the device's firmware level with that of the upgrade files. If it finds that the device's version is higher than the upgrade version, it brings up a dialog box informing you of the situation and gives you the option to Continue or Cancel.

If you didn't enable *Check Firmware Version*, the utility installs the upgrade files without checking whether they are a higher level, or not.

As the Upgrade proceeds, status messages appears in the Status Messages panel, and the progress toward completion is shown on the *Progress* bar.

## Upgrade Succeeded

After the upgrade has completed, a screen appears to inform you that the procedure was successful:



Click **Finish** to close the Firmware Upgrade Utility.

After a successful completion, the US3384i exit Firmware Upgrade Mode, and resets itself.

## Upgrade Failed

---

If the *Upgrade Succeeded* screen doesn't appear, it means that the upgrade failed to complete successfully, in which case you should do the following:

1. Power off the US3384i by removing the power input (power adapter or DC Terminal Block).
2. Invoke Firmware Upgrade Mode by pressing and holding the port selection pushbutton and then power on the US3384i. All the port status LEDs will start flashing to indicate it is now in Firmware Upgrade Mode.
3. Do the firmware upgrade procedure again.

## Baud Rate

---

When RS-485 / RS-232 terminal block is connected to the computer, please configure the general settings of your terminal program so you are able to communicate with the device.

### **RS-485 Baud Rate**

The default settings is shown below:

- ♦ Baud Rate: 38400
- ♦ Data Bit: 8 bit
- ♦ Parity: None
- ♦ Stop Bit: 1 bit
- ♦ Flow Control: none

### **RS-232 Baud Rate**

The default settings is shown below:

- ♦ Baud Rate: 115200
- ♦ Data Bit: 8 bit
- ♦ Parity: None
- ♦ Stop Bit: 1 bit
- ♦ Flow Control: none

## **Different Baud Rate**

Different baud rate is available with different firmware versions. If you wish to use a different baud rate for serial communication, please contact our ATEN Technical Support for assistance.

Go through the steps in *Firmware Upgrade* to upgrade to the new firmware / baud rate.

## **Port Selection**

---

**Port Selection Pushbutton:** Press the port selection pushbutton to switch the USB focus to the next port.

**Remote Port Selector:** When a remote port selector is connected, you can click the selector's button to switch the USB focus to the next port. The remote port selector (2XRT-0016G-1) is sold separately, please contact your ATEN dealer for production information.

The click-to-toggle action switches ports in numeric order. If the active port is at port 8, clicking the button will switch to port 1.

**RS-485 / RS-232 Port Selector:** When RS-485 or RS-232 is connected, you can send serial commands to the unit to select a different port. You can send serial commands to either switch the ports in numeric order (like pressing the port selection pushbutton on the front panel or the button on the remote port selector) or select a port directly.

## RS-485 / RS-232 Port Selection & Commands

When RS-485 or RS-232 is connected, you can use serial commands to select a different port. The table below describes the serial commands and the responses:

Command	Variable	Enter	Unit Action
sw	NA	[Enter]	Switches to the next port in the numeric order.
sw i0x	x = (1, 2, 3, 4, 5, 6, 7, and 8)	[Enter]	Switches to a specified port.
swmode priority i0x	x = (1, 2, 3, 4, 5, 6, 7, and 8)	[Enter]	Sets the specified port to a priority port. The computer focus automatically switches to the priority port when the focused computer is unplugged or powered off.
swmode priority	off	[Enter]	Disables the priority port function.
usb p0x	x = (1, 2, 3, 4, 5, 6, 7, and 8)	[Enter]	Displays the port status of a specified port.
pod	on, off	[Enter]	Enables / disables the power on detection function.
read	NA	[Enter]	Displays the current port status and firmware information.
reboot	NA	[Enter]	Reboots the US3384i.
reset	NA	[Enter]	Resets the US3384i back to its default settings.

If the unit replies with:

**Command OK**, the command is correct and unit action is executed.

**Command Incorrect**, the command is incorrect and no action is executed.

This Page Intentionally Left Blank

## **Safety Instructions**

---

### **General**

- ♦ This product is for indoor use only.
- ♦ Read all of these instructions. Save them for future reference.
- ♦ Follow all warnings and instructions marked on the device.
- ♦ Do not place the device on any unstable surface (cart, stand, table, etc.). If the device falls, serious damage will result.
- ♦ Do not use the device near water.
- ♦ Do not place the device near, or over, radiators or heat registers.
- ♦ The device cabinet is provided with slots and openings to allow for adequate ventilation. To ensure reliable operation, and to protect against overheating, these openings must never be blocked or covered.
- ♦ The device should never be placed on a soft surface (bed, sofa, rug, etc.) as this will block its ventilation openings. Likewise, the device should not be placed in a built in enclosure unless adequate ventilation has been provided.
- ♦ Never spill liquid of any kind on the device.
- ♦ Unplug the device from the wall outlet before cleaning. Do not use liquid or aerosol cleaners. Use a damp cloth for cleaning.
- ♦ The device should be operated from the type of power source indicated on the marking label. If you are not sure of the type of power available, consult your dealer or local power company.
- ♦ To prevent damage to your installation it is important that all devices are properly grounded.
- ♦ Do not allow anything to rest on the power cord or cables. Route the power cord and cables so that they cannot be stepped on or tripped over.
- ♦ Position system cables and power cables carefully; Be sure that nothing rests on any cables.
- ♦ Never push objects of any kind into or through cabinet slots. They may touch dangerous voltage points or short out parts resulting in a risk of fire or electrical shock.
- ♦ Do not attempt to service the device yourself. Refer all servicing to qualified service personnel.

- ♦ If the following conditions occur, unplug the device from the wall outlet and bring it to qualified service personnel for repair.
  - ♦ The power cord or plug has become damaged or frayed.
  - ♦ Liquid has been spilled into the device.
  - ♦ The device has been exposed to rain or water.
  - ♦ The device has been dropped, or the cabinet has been damaged.
  - ♦ The device exhibits a distinct change in performance, indicating a need for service.
  - ♦ The device does not operate normally when the operating instructions are followed.
- ♦ Only adjust those controls that are covered in the operating instructions. Improper adjustment of other controls may result in damage that will require extensive work by a qualified technician to repair.

## **Rack Mounting**

- ♦ Before working on the rack, make sure that the stabilizers are secured to the rack, extended to the floor, and that the full weight of the rack rests on the floor. Install front and side stabilizers on a single rack or front stabilizers for joined multiple racks before working on the rack.
- ♦ Always load the rack from the bottom up, and load the heaviest item in the rack first.
- ♦ Make sure that the rack is level and stable before extending a device from the rack.
- ♦ Use caution when pressing the device rail release latches and sliding a device into or out of a rack; the slide rails can pinch your fingers.
- ♦ After a device is inserted into the rack, carefully extend the rail into a locking position, and then slide the device into the rack.
- ♦ Do not overload the AC supply branch circuit that provides power to the rack. The total rack load should not exceed 80 percent of the branch circuit rating.
- ♦ Make sure that all equipment used on the rack – including power strips and other electrical connectors – is properly grounded.
- ♦ Ensure that proper airflow is provided to devices in the rack.
- ♦ Ensure that the operating ambient temperature of the rack environment does not exceed the maximum ambient temperature specified for the equipment by the manufacturer
- ♦ Do not step on or stand on any device when servicing other devices in a rack.
- ♦ **Caution:** Slide/rail (LCD KVM) mounted equipment is not to be used as a shelf or a work space.



## Technical Support

---

### International

- ♦ For online technical support – including troubleshooting, documentation, and software updates: <http://support.aten.com>
- ♦ For telephone support, see *Telephone Support*, page iv:

### North America

Email Support		support@aten-usa.com
Online Technical Support	Troubleshooting Documentation Software Updates	<a href="http://www.aten-usa.com/support">http://www.aten-usa.com/support</a>
Telephone Support		1-888-999-ATEN ext 4988 1-949-428-1111

When you contact us, please have the following information ready beforehand:

- ♦ Product model number, serial number, and date of purchase
- ♦ Your computer configuration, including operating system, revision level, expansion cards, and software
- ♦ Any error messages displayed at the time the error occurred
- ♦ The sequence of operations that led up to the error
- ♦ Any other information you feel may be of help

# Specifications

Function	US3384i
<b>Computer Connections</b>	8
<b>Connectors</b>	
Computer	8 x USB 3.2 Gen 1 Type-B Female (Blue)
Device	4 x USB 3.2 Gen 1 Type-A Female (Blue)
Serial	2 x 3-pin Terminal Block (Green)
Power	1 x 2-pin 9-24V Terminal Block (Green)
Power (Optional)	1 x 12V DC Jack Female (Black)
<b>Power Mode</b>	Terminal Block / DC Jack Power Adapter <b>Note:</b> The power adapter (0AD8-8012-50M2) is sold separately, please contact your ATEN dealer for product information.
<b>Power Consumption</b>	DC12V:0.52W:130BTU/h DC24V:0.53W:130BTU/h <b>Note:</b> <ul style="list-style-type: none"> <li>♦ The measurement in Watts indicates the typical power consumption of the device with no external loading.</li> <li>♦ The measurement in BTU/h indicates the power consumption of the device when it is fully loaded.</li> </ul>
<b>Port Selection</b>	Pushbutton / Remote Port Selector / Serial Command <b>Note:</b> The remote port selector (2XRT-0016G-1) is sold separately, please contact your ATEN dealer for product information.
<b>LEDs</b>	
Selected	8 (Orange)
<b>Cable Length</b>	
USB Cable	8 x USB 3.2 Gen 1 Type-A to USB Type-B Cables 1.2 m
<b>Environmental</b>	
Humidity	0 - 80% RH, Non-Condensing
Operating Temperature	0 - 50 °C

Function	US3384i
Storage Temperature	-20 - 60 °C
<b>Physical Properties</b>	
Housing	Metal
Weight	500 g (1.10 lb)
Dimensions (L x W x H)	20.00 x 8.06 x 2.50 cm (7.87 x 3.17 x 0.98 in)

## **ATEN Warranty Policy**

---

The warranty policy may vary by product category and region of purchase. For details, please visit ATEN's official website, select your purchase counties/regions and then go to the Support Center, or contact your local ATEN sales representative for further assistance.

© Copyright 2024 ATEN® International Co., Ltd.  
Released: 2024-12-26

ATEN and the ATEN logo are registered trademarks of ATEN International Co., Ltd. All rights reserved.  
All other brand names and trademarks are the registered property of their respective owners.