



Simply Better Connections

UC232B

USB to Serial Console Adapter
User Manual

Compliance Statements

FEDERAL COMMUNICATIONS COMMISSION INTERFERENCE STATEMENT

This equipment has been tested and found to comply with the limits for a Class B digital service, pursuant to Part 15 of the FCC rules. These limits are designed to provide reasonable protection against harmful interference in a residential installation. Any changes or modifications made to this equipment may void the user's authority to operate this equipment. This equipment generates, uses, and can radiate radio frequency energy. If not installed and used in accordance with the instructions, may cause harmful interference to radio communications. However, there is no guarantee that interference will not occur in a particular installation. If this equipment does cause harmful interference to radio or television reception, which can be determined by turning the equipment off and on, the user is encouraged to try to correct the interference by one or more of the following measures:

- ◆ Reorient or relocate the receiving antenna.
- ◆ Increase the separation between the equipment and receiver.
- ◆ Connect the equipment into an outlet on a circuit different from that to which the receiver is connected.
- ◆ Consult the dealer or an experienced radio/TV technician for help.

The device complies with Part 15 of the FCC Rules. Operation is subject to the following two conditions: (1) this device may not cause harmful interference, and (2) this device must accept any interference received, including interference that may cause undesired operation.

FCC Caution: Any changes or modifications not expressly approved by the party responsible for compliance could void the user's authority to operate this equipment.



KCC Statement

유선 제품용 / B 급 기기 (가정용 방송 통신 기기)
이 기기는 가정용 (B 급) 전자파적합기기로서 주로 가정에서 사용하는
것을 목적으로 하며, 모든 지역에서 사용할 수 있습니다.

Industry Canada Statement

This Class B digital apparatus complies with Canadian ICES-003.

| ICES-003 (B) / NMB-003 (B)

RoHS

This product is RoHS compliant.

Online Registration

International	http://eservice.aten.com
---------------	---

Telephone Support

International	886-2-8692-6959
China	86-400-810-0-810
Japan	81-3-5615-5811
Korea	82-2-467-6789
North America	1-888-999-ATEN ext 4988 1-949-428-1111

Technical Support

- ◆ For international online technical support – including troubleshooting, documentation, and software updates:
<http://eservice.aten.com>
- ◆ For North American technical support:

Email Support		support@aten-usa.com
Online Technical Support	Troubleshooting Documentation Software Updates	http://www.aten-usa.com/support
Telephone Support		1-888-999-ATEN ext 4998

Package Contents

Check to make sure that all the components are in working order. If you encounter any problem, please contact your dealer. The UC232B USB-to-Serial Console Adapter package contains the following items:

- ◆ 1 UC232B USB-to-Serial Console Adapter
- ◆ 1 User Instructions*

Note:

- ◆ Read this manual thoroughly and follow the installation and operation procedures carefully to prevent any damage to the unit or any connected devices.
- ◆ The product may be updated, with features and functions added, improved or removed since the release of this manual. For an up-to-date user manual, visit <http://www.aten.com/global/en/>

Overview

The ATEN UC232B is a one port USB-to-Serial console adapter.

This high quality industrial adapter cable is designed to instantly add single RS-232 console port connectivity for networking appliances via a USB port. The adapter is powered via the USB connection.

The UC232B is compatible with the USB 2.0 standard and works conveniently with desktop and notebook PCs. It also can be used with large integrated computer-based systems or other specialized applications, such as point-of-sale applications, networking equipment, industrial automation systems, and native serial transfer instruments to offer a convenient connectivity solution. The UC232B converter provides a plug & play solution.

Windows, Mac and Linux drivers are included.

Features

- ◆ Converts a USB port to RJ-45 Console port (RS-232)
- ◆ Supports straight RJ-45 cable, no need to use Rolled RJ-45 Cable for connecting Networking Router, modem or network switch for configuration
- ◆ Fast COM Port Transmission – up to 921.6 Kbps data transfer rate
- ◆ COM retention saves the assigned port settings for the device
- ◆ Proven performance in anti-electromagnetic interference (anti-EMI) capability for stable transmission performance
- ◆ OS Compatibility: Windows, Mac, Linux
- ◆ Plug-and-Play portability – small and lightweight enclosure makes it a perfect travel companion
- ◆ No external power supply needed
- ◆ A trustworthy connectivity solution recommended and adopted by leading enterprises worldwide
- ◆ USB 2.0 compliant

System Requirements

- ◆ USB Host Controller installed on the system

Operating Systems

Supported operating systems are shown in the table, below:

OS	Version
Windows	7, 8.1, 10 or above
Mac	OS X 10.10 or later
Linux Kernel	2.6.15 or later

If your Linux kernel is between v2.6.15 ~ v5.4 and your device has a new chipset version, please update the Linux driver from our product web page. This driver works with 2021 or later chipset version device only.

Use the link below to identify which chipset version your device is.

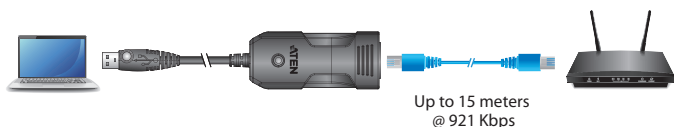
<http://eservice.aten.com/eServiceCx/Common/FAQ/view.do?id=18695>

How to Install

1. Connect the USB plug for the UC232B to your computer's USB port and wait for the drivers to automatically install the device.*

Note: If you are using an older computer, you may need to visit our website to download the UC232B drivers and install them before setting up the hardware.

2. Plug a Straight-through Ethernet cable to the RJ-45 connector on the UC232B.
3. Plug the other end of the Ethernet cable directly into an RJ-45 console port of the target networking device.
4. Optionally, connect an RJ-45 to DB-9 adapter to a rolled Ethernet cable (up to 15 m) when connecting to a standard DB-9 serial port on the target serial device.
5. Power on the target device.



Specifications

Function		Specification
Connectors	USB	Type A Plug Male (White)
	Serial	DB-9 Male (Silver)
LEDs		Power Status (Orange)
Data Transfer Rate		Up to 921.6 Kbps
Cable Length		1.2 m
Power Consumption		DC5V, 0.202 W
Power Mode		Bus Powered
USB Specification		2.0 Compliant
Environment	Operating Temp.	0–40° C
	Storage Temp.	-20–60° C
	Humidity	0–80% RH, Non-condensing
Physical Properties	Housing	Plastic
	Weight	0.6 kg
	Dimensions (L x W x H)	2.56 x 5.84 x 2.23 cm

Rolled Ethernet Cable Pin-Outs

Note the reversed correlation of 1 to 8, 2 to 7, and so on.

Console/Aux Cable Mode

UC232B RJ-45 Port		Console/Aux Port (DTE)		
Signal	Straight Cable Pin	RJ-45 Pin	Signal Type 1	Signal Type 2
CTS	1	1	RTS	-
DSR	2	2	DTR	DTR
RxD	3	3	TxD	TxD
GND	4	4	GND	GND
GND	5	5	GND	GND
TxD	6	6	RxD	RxD
DTR	7	7	DSR	DSR
RTS	8	8	CTS	-

Aten RS-232 Cable Mode

UC232B RJ-45 Port		Third Party RJ-45 to RS-232 Adapter		
Signal	Rolled Cable Pin	RJ-45 Pin	Signal	DB-9 Out
CTS	1	8	CTS	7
DSR	2	7	DSR	4
RxD	3	6	RxD	3
GND	4	5	GND	5
GND	5	4	GND	5
TxD	6	3	TxD	2
DTR	7	2	DTR	6
RTS	8	1	RTS	8

Thank you for purchasing this ATEN product! It is recommended that you register the product right away at our website: <http://eservice.aten.com>. This will give you access to useful add-on features, as follows:

- ◆ View details of all your registered ATEN products in one place
- ◆ Read about application tips and supporting information specific to your product
- ◆ Get fast service and response from our highly skilled engineers
- ◆ Receive the latest news and promotions from ATEN, and participate in customer surveys

ATEN warrants this product against flaws in the materials and workmanship during the warranty period which commence on the date of original purchase. The duration, terms, and conditions of the warranty period may vary from country to country. Please visit ATEN's website for more information or contact the ATEN office responsible for providing support in your country/region. Contact details for all ATEN offices are listed in the following table.

<p>Corporate Headquarters (Original Manufacturer) ATEN International Co., Ltd. Website: http://www.aten.com Address: 3F., No.125, Sec. 2, Datong Rd., Sijhih District., New Taipei City 221, Taiwan</p>	<p>U.S.A Subsidiaries (Importer) ATEN Technology Inc. Website: http://www.aten-usa.com Address: 19641 DaVinci Foothill Ranch, CA 92610, U.S.A ATEN New Jersey Inc. Address: 155 Pierce Street, Somerset, NJ 08873, U.S.A</p>
<p>Belgium Subsidiary (Importer) ATEN Infotech N.V. Website: http://www.aten.be Address: Mijnwerkerslaan 34 3550 Heusden-Zolder, Belgium</p>	<p>U.K. Subsidiary (Importer) ATEN U.K. Limited Website: http://www.aten.co.uk Address: 229 Berwick Avenue Slough, SL1 4QT, U.K.</p>
<p>Japan Subsidiary (Importer) ATEN Japan Co., Ltd. Website: http://www.atenjapan.jp Address: ATEN Bldg. 8-4, Minami-senjyu 3-chome, Arakawa-ku, Tokyo 116-0003 Japan</p>	<p>Korea Subsidiary (Importer) ATEN Korea., Ltd. Website: http://www.aten.co.kr Address: B-303, Gabeul Great Valley, 60-5, Gasan-dong, Geumcheon-gu, Seoul, Korea; 153-801</p>
<p>China Subsidiary (Importer) ATEN China Co., Ltd. Website: http://www.aten.com.cn Address: 18/F, Tower A, Horizon International Tower, No.6,Zhichun Road, Haidian District, Beijing, China 100088</p>	<p>Taiwan Subsidiary (Importer) Atech Peripherals, Inc. Website: http://www.aten.com.tw Address: 6F., No.133, Sec. 2, Datong Rd., Sijhih District., New Taipei City 221, Taiwan</p>

ATEN Standard Warranty Policy

Limited Hardware Warranty

ATEN warrants its hardware in the country of purchase against flaws in materials and workmanship for a Warranty Period of two [2] years (warranty period may vary in certain regions/countries) commencing on the date of original purchase. This warranty period includes the LCD panel of ATEN LCD KVM switches. For UPS products, the device warranty is two [2] years but battery is one [1] year. Select products are warranted for an additional year (see *A+ Warranty* for further details). Cables and accessories are not covered by the Standard Warranty.

What is covered by the Limited Hardware Warranty

ATEN will provide a repair service, without charge, during the Warranty Period. If a product is defective, ATEN will, at its discretion, have the option to (1) repair said product with new or repaired components, or (2) replace the entire product with an identical product or with a similar product which fulfills the same function as the defective product. Replaced products assume the warranty of the original product for the remaining period or a period of 90 days, whichever is longer. When the products or components are replaced, the replacing articles shall become customer property and the replaced articles shall become the property of ATEN.

To learn more about our warranty policies, please visit our website:

<http://www.aten.com/global/en/legal/policies/warranty-policy/>

© Copyright 2023 ATEN® International Co., Ltd.
Released: 2023-08-02

ATEN and the ATEN logo are registered trademarks of ATEN International Co., Ltd. All rights reserved. All other brand names and trademarks are the registered property of their respective owners.