

KH1508i/KH1516i Cat 5 High-Density KVM Over the NET™ Quick Start Guide

© Copyright 2010 ATEN® International Co., Ltd. www.aten.com
Altusen and the Altusen logo are trademarks of ATEN International Co., Ltd.
All rights reserved. All other trademarks are the property of their respective owners.
This product is RoHS compliant. PAPE-1214-Y00G Printing Date: 09/2010

Online Registration
International:
• http://support.aten.com
North America:
• http://www.aten-usa.com/product_registration
Technical Phone Support
International:
• 888-2-8692-6959
China:
• 86-10-5255-0110
Japan:
• 81-3-5323-7178
Korea:
• 82-2-467-6789
North America:
• 1-888-699-ATEN Ext: 4988
United Kingdom:
• 44-0-4481-58923



1 Package Contents

The KH1508i / KH1516i package consists of:

- 1 KH1508i or KH1516i Cat 5 High-Density KVM Over the NET™
- 1 Power Cord
- 1 Firmware Upgrade Cable
- 1 Rack Mount Kit
- 1 Foot Pad Set (4 pcs.)
- 1 User Manual
- 1 Quick Start Guide

2 Requirements

General

- For best results, we recommend that the computers used to access the KH1508i / KH1516i have at least a P III 1 GHz processor, and that their screen resolution is set to 1024 x 768
- For best results, we recommend an Internet connection speed of at least 128 kbps
- Browsers must support 128 bit data encryption
- To run the Windows client, you must have DirectX 8.0 or higher installed
- To run the Java client, you must have Sun's Java 2 (1.4 or higher) installed
- To run the Log Server, you must have the Microsoft Jet OLEDB 4.0 (or higher) driver installed

Console

- A VGA, SVGA, or multisync monitor capable of the highest resolution that you will be using on any computer in the installation.
- A PS/2 style mouse
- A PS/2 style keyboard

Computers

The following equipment must be installed on the computers:

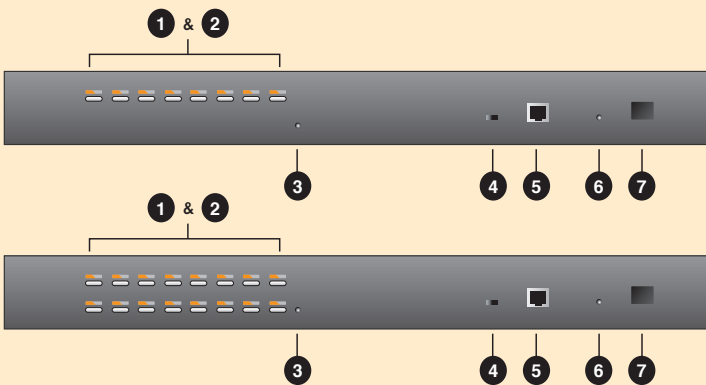
- A VGA, SVGA or multisync port
- A Type A USB port and USB host controller (for USB KVM Adapter Cable Connection, see below)
- 6-pin mini-DIN keyboard and mouse ports (for PS/2 KVM Adapter Cable Connection, see below)

KVM Adapter Cables

- Cat 5e/6 cable is required to connect the KH1508i / KH1516i to one of the KVM Adapter Cables.
- The following KVM Adapter Cables are required for use with the KH1508i / KH1516i:

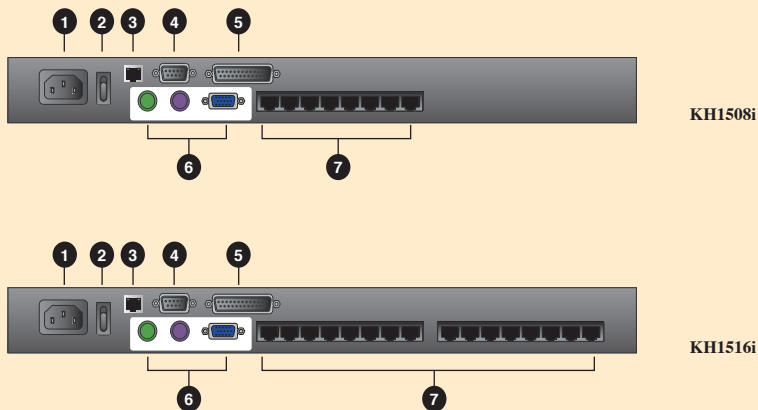
Function	Module
Connect to devices with PS/2 ports	KA9520
Connect to devices with USB ports	KA9570
Connect to Sun Legacy systems (with 13W3 port)	KA9130
Connect to Sun USB systems	KA9170
Connect to serial based devices	KA9140

3 KH1508i / KH1516i Unit (Front View)



- Port Selection Switches
- Port LEDs
- Reset Switch
- Firmware Upgrade Recovery Switch
- Firmware Upgrade Port
- Power LED
- Station ID LED

4 KH1508i/KH1516i Unit (Rear View)



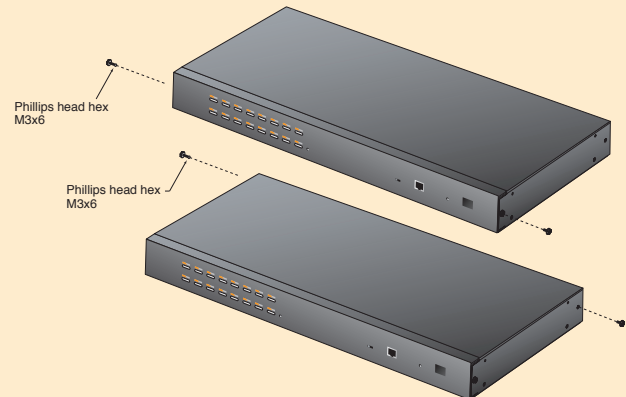
- Power Socket
- Power Switch
- LAN Port (10/100Mbps LED)
- PON Port
- Daisy Chain Port
- Local Console Port Section
- KVM Port Section

5 Hardware Installation 1

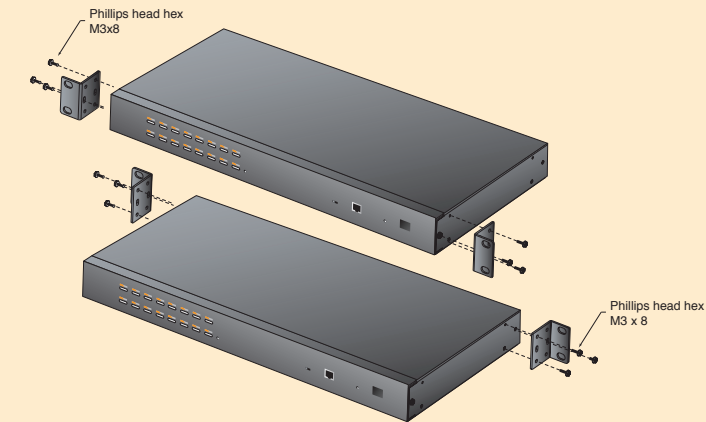
Rack Mounting

The KH1508i / KH1516i can be mounted in a 19" (1U) racks. The mounting brackets can screw into either the front or the back of the unit so that it can attach to the front or the back of the rack. To rack mount the unit:

- Remove the screws at the front or the rear, as shown in the diagram below.



- Screw the mounting brackets into the sides of the unit at the front or the rear, as shown in the diagram below.



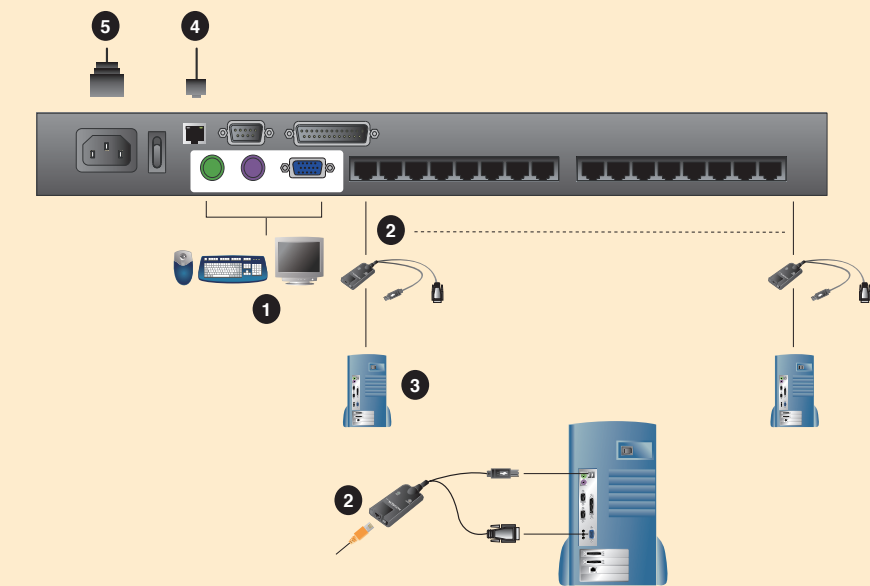
- Slide the unit into the front or rear of the rack and secure it to the rack.

6 Hardware Installation 2

Single Station Installation

- Plug your Local Console's keyboard, monitor, and mouse into the unit's Console Ports. Each port is color coded and marked with an appropriate icon to identify itself.
Note: The KH1508i / KH1516i does not support distances that exceed 20m between itself and the local monitor.
- Use Cat 5e/6 cable to connect any available KVM port to a KVM Adapter Cable that is appropriate for the computer you are installing.
Note: The KH1508i / KH1516i does not support distances that exceed 40m between itself and the KVM Adapter Cable.
- Connect the KVM Adapter Cable to the computer. Plug the connectors on the KVM Adapter Cable into the appropriate ports of the computer you are installing.
- Plug the LAN, WAN or Internet cable into the KH1508i/KH1516i's RJ-45 socket.
- Plug the female end of the power cord into the KH1508i / KH1516i's Power Socket; plug the male end into an AC power source.
- Turn on the power to the KH1508i / KH1516i.

After the KH1508i / KH1516i is powered up, you can turn on the computers.

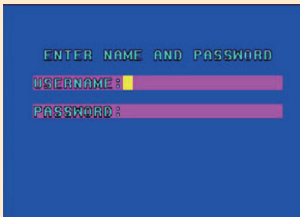


7 Local Console Operation

When setting up your KH1508i / KH1516i installation for the first time, we recommend doing it from the local console. Local console operation offers a menu driven On Screen Display (OSD) to handle computer control and switching operations.

All procedures start from the OSD Main Screen. To pop up the Main Screen, tap [Scroll Lock] twice.

The login screen appears:

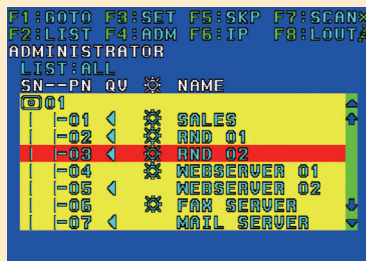


Enter a valid Username and password to continue.

Note:

- The default username is **administrator**; the default **password** is password. The first time you log in, you must use these defaults. For security purposes, we strongly recommend that you change the default password to something unique.
- Usernames and passwords cannot be managed from the local console. User management is handled via remote administration.

After you successfully log in, a screen similar to the one below appears:



F1 GOTO	GOTO allows you to switch directly to a port either by keying in the port's Name, or its Port ID.
F2 LIST	This function lets you broaden or narrow the scope of which ports the OSD displays (lists) on the Main OSD Screen.
F3 SET	This function allows the Administrator and each User to set up their own working environment.
F4 ADM	It allows the Administrator to configure and control the overall operation of the OSD.
F5 SKP	This function enables you to easily skip backward or forward, switching the console focus from the currently active KVM Port to the previous or next available one.
F6 IP	This function allows you to select whether to assign the KH1508i / KH1516i's IP address dynamically (DHCP), or to give it a fixed IP address. Press [Enter] to toggle between the choices. If you toggle DHCP Enable to Off, specify the IP, Mask, and Gateway in the appropriate fields. Press [Esc] to exit after you have finished with your choice.
F7 SCAN	Pressing [F7] invokes Auto Scan Mode.
F8 LOUT	Pressing [F8] logs you out of OSD control of the computers, and blanks the Console screen.

OSD Port Selection

To bring the KVM focus to a port, Double Click it, or move the Highlight Bar to it then press [Enter].

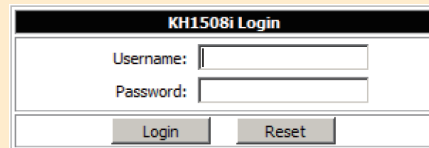
8 Browser Operation

An On Screen Display (OSD) interface governs remote KH1508i / KH1516i administration as well as user configuration and port switching operations. The OSD can be accessed either with a Windows-based client or a Java-based client. In order to perform remote operations, you must first log in via an Internet browser to connect to the KH1508i / KH1516i.

To log in from an Internet browser:

- Open the browser and specify the IP address of the KH1508i / KH1516i in the URL bar.
Note: If you don't know the IP address, get it from the KH1508i / KH1516i administrator.
- When the Security Alert dialog box appears, accept the certificate.

3. A login page appears.



4. Provide a valid Username and Password (set up by the KH1508i / KH1516i administrator), then Click Login to continue.

After you have successfully logged in, the KH1508i / KH1516i Main Webpage appears with the General dialog box displayed. You can click the Windows Client button (or Java Client button) to activate the browser-based Windows Client OSD (or Java Client OSD).



9 Hotkey Operation Mouse Setup

In addition to being able to access and control the devices on your installation via the OSD, the KH1508i / KH1516i also supports port control directly from the keyboard with the use of hotkey combinations.

All Hotkey operations begin by invoking Hotkey Mode. Invoking Hotkey Mode takes three steps:

- Hold down the Num Lock key;
- Press and release the minus key;
- Release the Num Lock key: [Num Lock] + [-];

Hotkey summary table:

After invoking Hotkey Setting Mode, key in one of the following keys to perform the corresponding function:

Key	Function
[Port ID] [Enter]	Switches access to the computer that corresponds to that Port ID.
[T] [n] [Enter]	Sets the Auto Scan interval to n seconds - where n is a number from 1 - 255.
[A]	Invokes Auto Scan Mode.
[←] or [→] or [↑] or [↓]	Invokes Skip Mode and Switches computer access depending on which Arrow was pressed.
[B]	Toggles the Beeper On or Off.

Mouse Setup

The following mouse setting procedures should be performed on each computer connected to the KH1508i/KH1516i.

Windows Systems:

Note: You must use the generic mouse driver supplied with Windows.

* XP / Server 2003 -- middle position; Enhance pointer precision: off

* 2000 / ME -- Mouse motion: middle position; Acceleration: off

* NT / 98 / 95 -- Mouse speed: slowest

Sun / Linux Systems:

Open a terminal session and issue the following command:

* Sun: xset m 1

* Linux: xset m 0

10 Specifications

Function		KH1508i	KH1516i
Computer Connections	Direct	8	16
	Max.	128 (via Daisy Chain)	256 (via Daisy Chain)
Port Selection	OSD, Hotkey, Pushbutton		
	Console Ports	Keyboard	1 x 6-pin Mini-DIN Female (Purple)
		Video	1 x HDB-15 Female (Blue)
		Mouse	1 x 6-pin Mini-DIN Female (Green)
Connectors	KVM Ports	8 x RJ-45 Female	16 x RJ-45 Female
	Daisy Chain Ports	1 x DB-25 Male (Black)	1 x DB-25 Male (Black)
	Power	1 x 3-prong AC Socket	1 x 3-prong AC Socket
	LAN	1 x RJ-45 Female	1 x RJ-45 Female
	PON	1 x DB-9 Male (Black)	1 x DB-9 Male (Black)
	Reset	1 x Semi-recessed Pushbutton	1 x Semi-recessed Pushbutton
Switches	Power	1 x Rocker	1 x Rocker
	Port Selection	8 x Pushbutton	16 x Pushbutton
	F/W Upgrade	1 x Slide	1 x Slide
LEDs	On Line	8 (Green)	16 (Green)
	Selected	8 (Orange)	16 (Orange)
	Power	1 (Blue)	1 (Blue)
	Station ID	2 x 7-segment (Orange)	2 x 7-segment (Orange)
	Link	1 (Green)	1 (Green)
Emulation	10/100Mbps	1 (Orange/Green)	1 (Orange/Green)
	Keyboard/Mouse	PS/2; USB(PC, Mac, Sun); Serial	PS/2; USB(PC, Mac, Sun); Serial
Video	Local	1600 x 1200@60Hz (30m)	1600 x 1200@60Hz (30m)
	Remote	1280 x 1024@75Hz	1280 x 1024@75Hz
Scan Interval		1-255 Seconds	1-255 Seconds
I/P Rating		100-240V AC; 50/60Hz	100-240V AC; 50/60Hz
Power Consumption		120V/12W; 230V/12W	120V/12W; 230V/12W
	Operating Temp.	0-50° C	0-50° C
Environment	Storage Temp.	20-60° C	20-60° C
	Humidity	0-80% RH; Non-condensing	0-80% RH; Non-condensing
Physical	Housing	Metal	Metal
	Weight	2.80 kg	2.80 kg
Properties	Dimensions (L x W x H)	43.72 x 16.10 x 4.40 cm (19" / 1U)	43.72 x 16.10 x 4.40 cm (19" / 1U)

* All specifications are subject to change without notice.