

User Guide

KE0220 Audio KVM Extender User Guide

© Copyright 2010 ATEN® International Co., Ltd. www.aten.com
Altusen and the Altusen logo are trademarks of ATEN International Co., Ltd.
All rights reserved. All other trademarks are the property of their respective owners.
This product is RoHS compliant. PAPE-1214-T00G Printing Date: 11/2010

Online Registration
International:
+ http://support.aten.com
North America:
+ http://www.aten-usa.com/product_registration
Technical Phone Support
International:
+ 886-2-8692-6959
China:
+ 86-10-5255-0110
Japan:
+ 81-3-5323-7178
Korea:
+ 82-2-467-6789
North America:
+ 1-888-099-ATEN Ext: 4988
United Kingdom:
+ 44-1-4431-58923



The following contains information that relates to China:

部件名称 电器部件 机构部件	有毒有害物质或元素				
	铅	汞	镉	六价铬	多溴联苯 多溴二苯醚
	●	○	○	○	○
	○	○	○	○	○

○: 表示该有毒有害物质在该部件所有均质材料中的含量均在SJ/T 11363-2006规定的限量要求之下。
●: 表示符合欧盟的豁免条款, 但该产品有毒有害物质至少在在该部件的某一均质材料中的含量超出SJ/T 11363-2006的限量要求。
×: 表示该有毒有害物质至少在该部件的某一均质材料中的含量超出SJ/T 11363-2006的限量要求。



1

Package Contents

The complete package consists of:

- 1 KE0220L (Local Unit)
- 1 KE0220R (Remote Unit)
- 1 Custom PS/2 KVM Cable Set (1.8m)
- 2 Power Adapters
- 1 Rack Mount Kits
- 1 User Guide

Requirements

Consoles

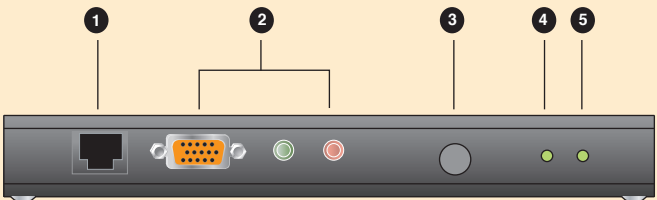
- 2 VGA, SVGA, or Multisync monitors capable of the highest resolution that you will be using on any computer in the installation
- 2 PS/2 style keyboards
- 2 PS/2 style mice
- Microphone and stereo speakers (Optional)

Note:

1. If you connect a DDC type monitor to the Local Unit, the monitor that connects to the Remote Unit must be able to support the highest video resolution that the DDC monitor can provide.
2. We strongly Recommend that you use Cat 5e cable.

2-1

KE0220L Front View

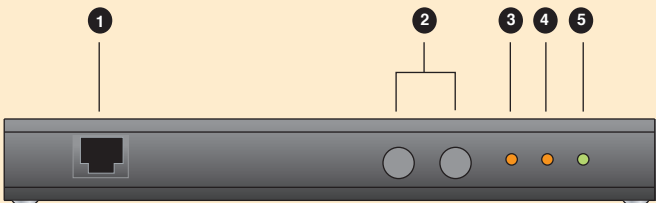


	Description	Function
1	Remote I/O	The Cat 5e cable that connects this unit to the Remote Unit plugs in here.
2	CPU Port Section	KVM®, microphone and speaker cable connectors.
3	Local/Remote Selection Button	Press to toggle through operating mode choices: 1) Local: only local console controls system; 2) Remote: only remote console controls system; 3) Auto: both consoles control system.
4	Local LED	On: local console active Off: remote console active Flash: neither console active
5	Remote LED	On: remote console active Off: local console active Flash: neither console active

* The shape and pin assignment of these 15-pin connectors has been specifically modified so that only KVM cables designed to work with this switch can be connected. Do NOT attempt to use ordinary 15 pin VGA connector cables to link these ports to the computers.

2-2

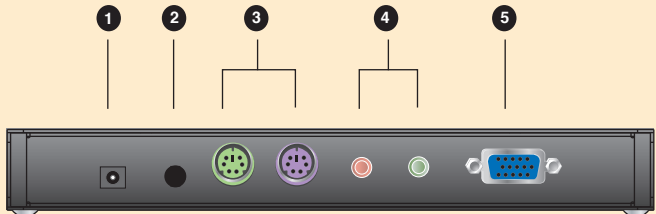
KE0220R Front View



	Description	Function
1	Remote I/O	The Cat 5e cable that connects this unit to the Local Unit plugs in here.
2	Picture Compensation	Adjust the picture quality of the remote console by increasing or decreasing the video signal gain. Press (+) to increase the gain. Press (-) to decrease the gain.
3	Picture Compensation LED	On: gain adjustment completed and saved Flash: gain needs adjustment or is being adjusted
4	On Line LED	On: remote console active Off: local console active or connection has problem Flash: neither console active
5	Power LED	On: connection to the Local Unit is OK Flash: connection to the Local Unit has problem

2-3

KE0220L / KE0220R Rear View



	Description	Function
1	DC Power Jack	The Power Adapter cable connects here.
2	Firmware Upgrade Port (KE0220L only)	The Firmware Upgrade Cable connects here and to the administrator's computer to upgrade the firmware.
3	Keyboard/Mouse Ports	PS/2 ports for keyboard (purple) and mouse (green).
4	Console Audio Jacks	The microphone and stereo speakers connect here.
5	Monitor Port	The monitor connects to this port.

3-1

Hardware Installation

Installing your KVM Extender System involves the following eight steps (please refer to the installation diagram):

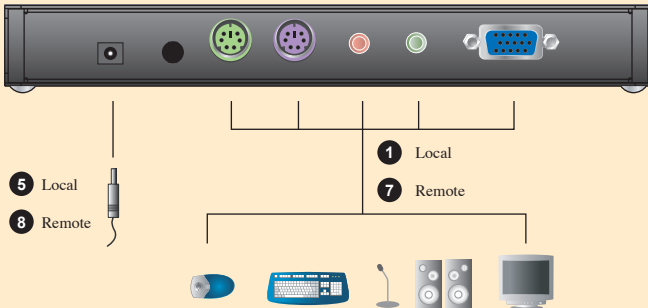
Important: Ensure that all equipment to be connected is powered off.

1. Connect the local console devices (mouse, keyboard, monitor, microphone and speakers) to the ports on the rear of the Local Unit (KE0220L).
2. Plug the provided KVM cable into the appropriate connectors on the front of the KE0220L. Each connector is marked with an identifying icon.
3. Plug the connectors on the other end of the KVM cable into the appropriate ports on the computer system (or Console section of the KVM switch - if you are using one). Each connector is marked with an identifying icon.
4. Connect one end of a Cat 5e cable to the Remote I/O port on the KE0220L. (Cat 5e cable not provided.)
5. Connect one of the provided power adapters into an AC power source; connect the adapter's power cable to the DC Power Jack on the KE0220L.
6. Plug the other end of the Cat 5e cable into the Remote I/O port on the KE0220R.
7. Connect the remote console devices (mouse, keyboard, monitor, microphone and speakers) to the ports on the rear of the Remote Unit (KE0220R).
8. Connect the other provided power adapter into an AC power source; connect the adapter's power cable to the DC Power Jack on the KE0220R.

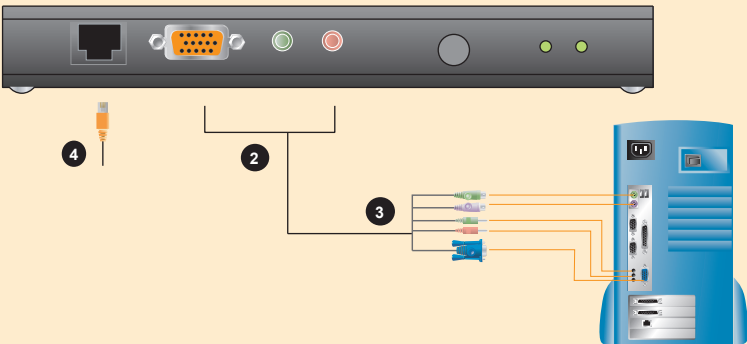
3-2

Installation Diagram

KE0220L / KE0220R Rear View



KE0220L Front View



KE0220R Front View



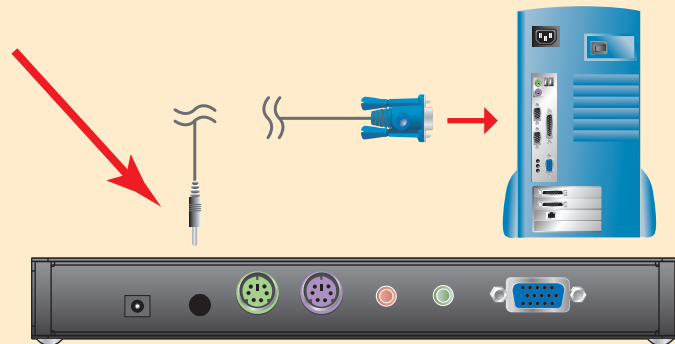
4-1

Firmware Upgrade Utility

Check our website regularly to find the latest firmware upgrade packages.

Before You Begin

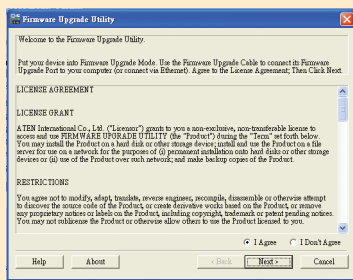
1. From any computer that is not part of your KVM installation, go online to the www.altusen.com website and download the latest Firmware Upgrade package for your KE0220.
2. Shut down the computer(s) on your KE0220 installation, and unplug the power adapter from the Local Unit.
3. Press and hold the Local/Remote selection button on the Local Unit, and then re-connect the power adapter.
4. Wait until both green LEDs on the front panel of the Local Unit are flashing before releasing the Local/Remote selection button. The green and orange LEDs on the front panel of the Remote Unit should also be on to indicate Firmware Upgrade Mode is in effect.
5. Use the Firmware Upgrade Cable provided with this unit to connect a COM port on your computer to the Firmware Upgrade Port on the switch.



4-2

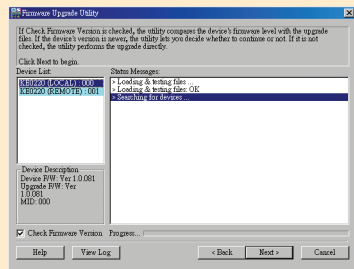
Starting the Upgrade

1. Run the Firmware Upgrade Utility. Select the I Agree radio button and click Next.

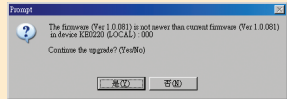


Note: The screens shown in this section are for reference only. Actual Firmware Upgrade Utility screens may vary slightly in appearance.

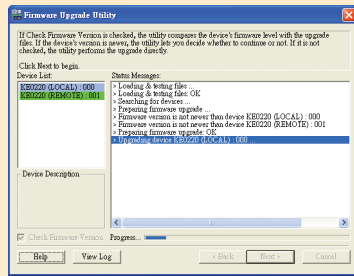
2. All devices capable of being upgraded are listed in the Device List. Select a device to see a description in the Device Description panel. Click Next to perform the upgrade. This process must be done for each device you wish to upgrade.



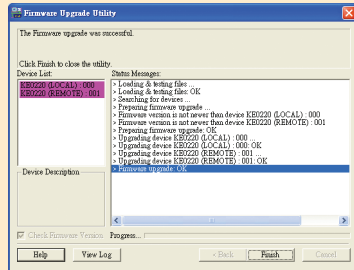
3. If you enable Check Firmware Version, the utility compares the current firmware level with that of the upgrade files. If the current firmware version is the same level or higher than the upgrade files, a dialog box appears prompting you to continue or cancel the upgrade. Click Yes to upgrade the firmware.



4. A message appears under Status Messages indicating the device that is being upgraded. A bar at the bottom marks the progress of the upgrade.



5. After the upgrade has completed, a screen informs you that the upgrade was successful. Click Finish to close the Firmware Upgrade Utility. The devices will exit Firmware Upgrade Mode and auto-reset.



Note: If the Upgrade Succeeded screen does not appear, the upgrade failed. You will need to repeat the upgrade process starting over from the beginning.

5

Specifications

Function		KE0220L	KE0220R
Connectors	Console Ports	Keyboard	1 x 6-pin Mini-DIN Female (Purple)
		Video	1 x HDB-15 Female (Blue)
		Mouse	1 x 6-pin Mini-DIN Female (Green)
		Speaker	1 x Mini Stereo Jack Female (Green)
		Microphone	1 x Mini Stereo Jack Female (Pink)
	KVM Ports	Keyboard/Video/Mouse	1 x SPHD-15 Female (Yellow)
		Speaker	1 x Mini Stereo Female (Green)
		Microphone	1 x Mini Stereo (Pink)
	Unit to Unit		1 x RJ-45 Female
	Firmware Upgrade		1 x 4-conductor 3.5mm Jack
Switches	Power		1 x DC Jack
	Selection Mode		1 x Pushbutton
	Gain Control		N/A
LEDs	1 x Local (Green)		1x Online (Orange)
	1 x Remote (Green)		1 x Power (Green)
Emulation	Keyboard/Mouse		PS/2
	Video		1600 x 1200 @ 60Hz, 150m 1280 x 1024 @ 60Hz, 200m
Power Consumption		DC5.3V, 2.7W	
Environment	Operating Temp		0-50°
	Storage Temp		-20° - 60°
Physical Properties	Humidity		0-80%RH, Non-Condensing
	Housing		Metal
	Weight		0.50 kg
Dimensions (L x W x H)		20.00 x 8.00 x 2.50 cm (1U)	

Note: The video quality may improve by reducing the refresh rate.